











Technical Catalogue Process Control Systems



Elabo modular system for process control stations

TaCom^{SP}

Modular concept
with maximum flexibility

	Process control stations	16
	Storage	28
	Control panel	29
	Visual protection and noise insulation	30
	Mounting elements	33
	Lighting	36
	Installation Cable management	37
	Power	40
	Raising consoles	46
	Furniture	54

Elabo TaCom^{SP} is an advanced furnishing system for control rooms. Advanced means: The successful TaCom system concept was improved using the most up-to-date knowledge and optimised for increased demands on system variability, not only keeping pace with technological advancements and shifting market conditions, but also exceeding them.

Elabo TaCom^{SP} is a modular concept with maximum flexibility – a typical Elabo Open Space System. Using a single-space solution with one monitor level, a linked, angled solution with one or two monitor levels can be formed – gradually and based on changing needs. The system has a plethora of intelligent detail solutions that reduce installation and maintenance times

and ultimately benefit full use of operating times. The Elabo TaCom^{SP}'s range of uses is extremely versatile. It is suited equally for telecommunications and industry, the energy sector, data processing and computer centres, network management, traffic control stations, emergency services, fire and police departments as well as security services, building service centres, gates and testing facilities, production control centres and control rooms, not least due to its enormous design variability.

TaCom^{SP} - Systematic Progression



7 important reasons for choosing complete solutions by Elabo

1 Complete room solutions right down to the last detail



The spectrum of Elabo process control rooms spans from functional basic elements to height-adjustable monitor walls. Even installing technology in the control stations is modular and easily performed. Elabo's many years of experience in designing and producing technical work station systems ensure vastly greater functionality in all areas than simple wooden solutions.

2 Professional technology integration



Elabo has been producing technical work station systems since 1972. The professional integration of electrical and electronic equipment has always been one of Elabo's strengths, whether a telephone unit needs to be permanently installed or the entire control system for a lock must be optimally laid out. Each of Elabo's solutions are always at a high technical level.

3 Modular system, open for expansion



Elabo furnishings are functional and ergonomically ground-breaking - and also highly durable. New demands can be met at any time with select expansions, yet nothing can stand in the way of a complete rearranging, since the modules are cross-compatible and can be expanded even years later; a service greatly appreciated by our customers.

4 Optimum concentration and performance



The consequences of unfocused work - especially in monitoring - are often tragic. This is why a variety of aspects must be observed as early as in the design stage for control rooms. Often it's the small details that prove decisive - and it's a good thing when the furniture meets these stringent requirements. This is why Elabo control rooms are always designed and built using the latest ergonomic knowledge and standards, such as EN ISO 11064.

5 Design individual work stations



Control rooms are not seldom the core of a company. This is where functional technology and attractive design meet. With Elabo control rooms, there's no need for compromises here. The continuity of a company's CI doesn't stop at its control rooms, regardless of colour scheme or form.

6 Functional reliability and quick access



Breakdowns and outages endanger ongoing operations and cost money. That's why it's important to resolve these interruptions as quickly as possible. When designing the Elabo control room programme, high value was placed on universal accessibility. This allows the front and rear covers to be removed in seconds and without tools to allow unrestricted access to the interior components.

7 Maximum support for project work



Our control room projects are planned and supervised by certified work station experts with years of experience. We work with you to ensure not only international regulations, but also aspects such as lighting and ergonomics are planned to the smallest detail. Start looking forward to your optimal solution today!

TaCom^{SP}

Ergonomic

Flexible

Modular



The continuously adjustable monitor area in the low table variant hides the feet of the monitors, improving displays and large screen presentations.



Ergonomically arranged controls are a must for efficient operations. A clear layout of informational and signal devices is just as essential. With their 20° slant, the console variants offer controls directed at the user. Individually designed front plates house the existing control components.



A clean and structured engineering room helps in replacing faulty units in the event of malfunction. Height-adjustable cable lattice tracks assist in laying electrical wiring in optimal fashion. Quick-release buttons in the hidden substructure doors ensure immediate access to components in the event of malfunction. Optional ventilators allow for optimal substructure ventilation.



Completely legless corner combinations as well as standard legroom in any location are matters of course with Elabo.



Cabinets allow further technological components to be installed or serve to store work equipment.

TaCom^{SP}

The Elabo TaCom^{SP} module concept for designing process control stations offers the best ergonomics and maximum flexibility. Each application determines the selection of kit elements from the diversified Elabo TaCom^{SP} platform. Far from a static, immovable system, it is a system that can be changed to meet shifting needs. Its modular design is the basis of this freedom.



TaCom Basic Process Control work stations

The process control station for basic tasks. The desktop work surface comes in one piece. Comes with visual protection screens on the back side that also double as cable trays. Basic is the variant for all office work or when the monitor needs to be placed directly on the desktop and no storage space is needed.



TaCom Plane Process Control work stations

The process control station for all things administrative. The desktop work surface is one piece and cut to size. Comes standard with the TecSafe electronics cabinet substructure. Plane is the variant for all kinds of written work or when monitors need to be placed directly on the desktop.



TaCom Low Process Control work stations

The process control station for height-reduced monitor placement. The monitor areas can be lowered in relation to the desktop work station area. The installation height in the TecSafe electronics cabinet substructure however is not reduced.

Low is the variant for optimal monitor layout for simultaneous clear viewing of a front-side video wall or an overview chart.



TaCom Console Process Control work station

The process control station for operating, control and monitoring elements. Separate devices can be installed, as can modules with front plates. Devices can be installed in the integrated aluminium housing for ease of maintenance.

Pick Console for the control element integration with the greatest operability. TFT monitors can also be installed in the back area of Console as needed.

Elabo also offers mountable cable crossbeams for clear and flexible routes to the TecSafe. Mounting rails on the rear wall allow for various mounting positions. The cable route is completely continuous, even in corner elements.

TecSafe functionality – cable management included



In addition to strict ergonomic demands made of a process control room, housing technology is also essential. Elabo continues to offer a modular concept even in this area to satisfy all needs, whether the elements should be housed on a pull-out for quick access or 19" compatible built-in components need to be integrated.



Pull-out shelving makes access extremely easy. With the pull-out installed at the front or at the back as desired, the technology can be pulled out from the platform, providing a larger access area.



The common 19" standard is incorporated accordingly even in the Elabo TaCom^{SP}. 19" installation kits can be easily included in the TecSafe. Additionally, track guides and shelving help optimally organise the engineering room.



Elabo also offers mountable cable crossbeams for clear and flexible routes to the TecSafe. Mounting rails on the rear wall allow for various mounting positions. The cable route is completely continuous, even in corner elements.



All hardware areas come standard with level adjusters, making uneven surfaces no obstacle for optimal orientation.

It is rare to have a process control station without control or entry devices such as free-standing keyboards, telephones or signal devices. With Elabo, nothing can stand in the way of shapely installation. Decades of experience in manufacturing electrical and electronic devices guarantees professional and service-friendly installation of components.



As each person is different, so must a work station be able to be flexible. The pivoting, electromotive console attachments for installing monitors or media and signal devices ensure a constant orientation toward the operator. On top of that, the position on the work space can also be changed.

Optimal use of space and short operating paths are the focus of Elabo's designs. This is the only way to create process control stations that offer the user maximum comfort. The front plates can be removed individually so that a defective unit can be immediately replaced without impacting the operation of the remaining units.



There is a solution to every problem. If the number of command and signal devices require more space, larger control consoles can be delivered.

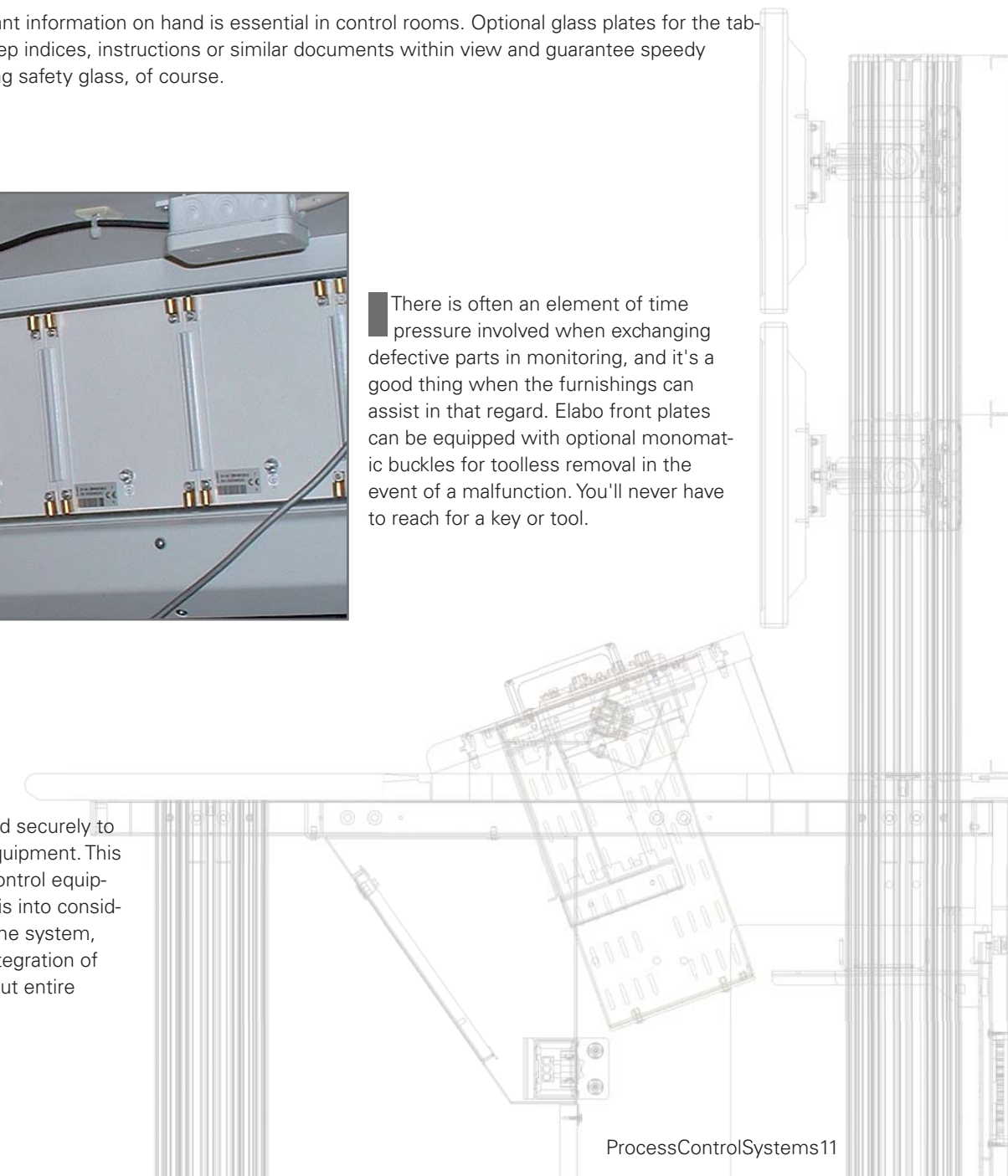


Always having important information on hand is essential in control rooms. Optional glass plates for the tabletops allow you to keep indices, instructions or similar documents within view and guarantee speedy access. And non-reflecting safety glass, of course.



There is often an element of time pressure involved when exchanging defective parts in monitoring, and it's a good thing when the furnishings can assist in that regard. Elabo front plates can be equipped with optional monomatic buckles for toolless removal in the event of a malfunction. You'll never have to reach for a key or tool.

The 19" grid is anchored securely to many places on the equipment. This also applies to process control equipment. Elabo has taken this into consideration when designing the system, allowing the seamless integration of not only control panels, but entire instruments.



TaCom^{SP}

Shapely – Design

The colour schemes of monitoring stations play an important role. In addition to the basic combinations of light grey and basalt grey, the furniture surfaces can also be delivered in other patterns for boundless individuality. Needs-based design adapted to requirements are the strengths of the TaCom^{SP} control room system.



Professional project management means efficient and speedy project completion. Trained work station experts guarantee the best solution from the start of planning to construction and beyond.



Cabinet system tabletops and front surfaces in light grey RAL7035 or alternative in maple or beech.



One of many examples:
Conference room with pull-out media equipment offers optimal use of space, saving on ongoing operating costs thanks to the flexibility of the TaCom system. State-of-the-art process technology paired with stable mechanics guarantees long-term system availability.



Basalt grey
7012



Table legs and expansion beams

White aluminium
9006



Visual protection screens, shelves,
crossbeams

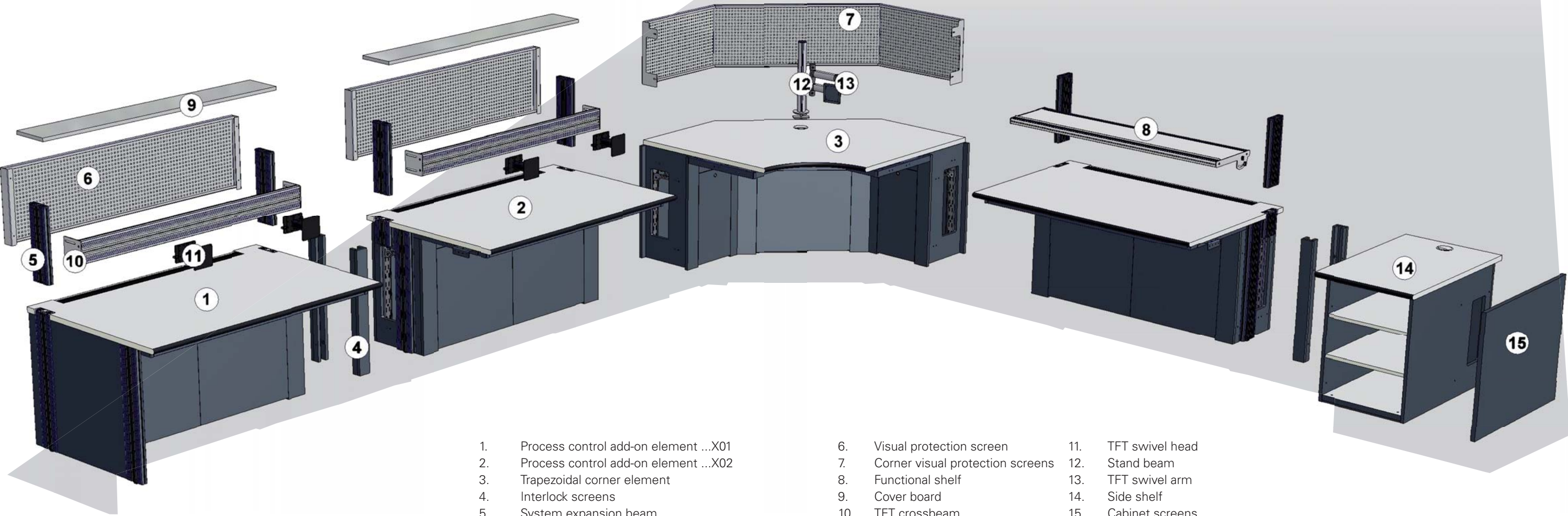


Cabinet systems with TecSafe and wooden bodies in basalt grey

Other colours and patterns are available upon request.

The combination of standard and add-on modules allows for virtually every setup

Elabo process control stations are systematically and modularly constructed. Complete control rooms form out of basic modules linked together. Depending on need, expansion modules and accessories can also be installed. Expansions to meet future needs can be added on at any time. The system never loses flexibility or technical integration functionality.



- | | | | | | |
|----|---------------------------------------|-----|----------------------------------|-----|-----------------|
| 1. | Process control add-on element ...X01 | 6. | Visual protection screen | 11. | TFT swivel head |
| 2. | Process control add-on element ...X02 | 7. | Corner visual protection screens | 12. | Stand beam |
| 3. | Trapezoidal corner element | 8. | Functional shelf | 13. | TFT swivel arm |
| 4. | Interlock screens | 9. | Cover board | 14. | Side shelf |
| 5. | System expansion beam | 10. | TFT crossbeam | 15. | Cabinet screens |



Process control station for basic tasks

Cable route through back-end large volume metal cable tray accessible from user end.
The back-end system profiles can be extended upward at any time in the Open Space system.

Desktop worktop made out of HPL. A 40 mm cassette brush for plug and cable feeding is on the backside of the space.
Front tabletop with interchangeable, ergonomic FlexiLine front edge in black.
Other worktops and free-form front edges available upon request.

Technical data:

TaCom width: W = 1,200, 1,500, 1,600, 1,800, 2,000 mm
TaCom depth: T = 1,000 mm
TaCom height: H = 750 mm
Standard desktop colour: RAL 7035 light grey

Cable tray depth: D = 170 mm
Cable tray height: H = 400/110 mm
Standard cable tray colour: RAL 7012 basalt grey

Order numbers:
Depth 1,000 mm

W = 2,000 mm
W = 1,800 mm
W = 1,600 mm
W = 1,500 mm
W = 1,200 mm

Options and accessories:

Riser duct
Channel end screens (pair)

P6-1A
P6-1B
P6-1C
P6-1D
P6-1E

P3-8V
P3-8Y

Trapezoidal
Corner
element 90°
Front diagonal
600 mm



Cable route through back-end circumferential large-volume metal cable tray.

Cable outlet box 80 mm

Desktop worktop made out of HPL.
In the centre-rear of the space is an 80 mm cable outlet box for feeding plugs and cables.
Front tabletop with interchangeable, ergonomic FlexiLine front edge in black.
Other worktops and free-form front edges available upon request.

Technical data:

TaCom height: H = 750 mm
TaCom depth: T = 1,000 mm
Standard desktop colour: RAL 7035 light grey
Standard cable tray colour: RAL 7012 basalt grey
Outer side length L = 1,424 mm

P7-1A



Trapezoidal
Corner
element 90°
Front diagonal
55 mm



Design similar to P7-1A but with front diagonal 55 mm.

For depth 1,000

Outer side length L = 1,038 mm

Options and accessories:

Riser duct

P7-1B

P3-8V

Square
Corner
element 90°
Front diagonal
600 mm



Cable route through back-end circumferential large-volume metal cable tray. **P7-1C**

Cable outlet box 80 mm

Desktop worktop made out of HPL.
In the centre-rear of the space is an 80 mm cable outlet box for feeding plugs and cables.
Front tabletop with interchangeable, ergonomic FlexiLine front edge in black.
Other worktops and free-form front edges available upon request.

Technical data:

TaCom height:	H = 750 mm
TaCom depth:	T = 1,000 mm
Standard desktop colour:	RAL 7035 light grey
Standard cable tray colour:	RAL 7012 basalt grey
Outer side length	L = 1,424 mm

Square
Corner
element 90°
Front diagonal
55 mm



Design similar to P7-1C but with front diagonal of 55 mm. **P7-1D**

Outer side length L = 1,038 mm

Options and accessories:

Riser duct

P3-8V

Angle element
30°
Front diagonal
55 mm



Cable route through back-end large volume metal cable tray. **P7-4A**

Cable outlet box 80 mm

Desktop worktop made out of HPL.
In the centre-rear of the space is an 80 mm cable outlet box for feeding plugs and cables.
Front tabletop with interchangeable, ergonomic FlexiLine front edges in black.
Other worktops and free-form front edges available upon request.

Technical data:

TaCom height:	H = 750 mm
TaCom depth:	T = 1,000 mm
Standard desktop colour:	RAL 7035 light grey
Standard cable tray colour:	RAL 7012 basalt grey
Rear edge length	= 573 mm

Angle element
45°
Front diagonal
55 mm



Design similar to item P7-4A but at 45°. **P7-4B**

TaCom depth: T = 1,000 mm
Rear edge length = 820 mm

Angle element
60°
Front diagonal
55 mm



Design similar to item P7-4A but at 60°. **P7-4C**

TaCom depth: T = 1,000 mm
TaCom depth: D = 1055 mm

Angle element
15°
Front diagonal
55 mm



Design similar to item P7-4A but at 15°. **P7-4D**

TaCom depth: T = 1,000 mm
Rear edge length = 316 mm



Process control station for administrative tasks

Tec-Safe substructure for technology integration.
The front and rear cover can be removed using the quick-release fasteners. The substructure contains a toolless, height-adjustable wire tray for cable feeds.
Up to 4 wire trays can be installed if desired.
Furthermore, the substructure can be equipped with 19" modules from the accessories range in order to integrate 19" equipment.
The back-end system profiles can be extended upward at any time in the Open Space system.

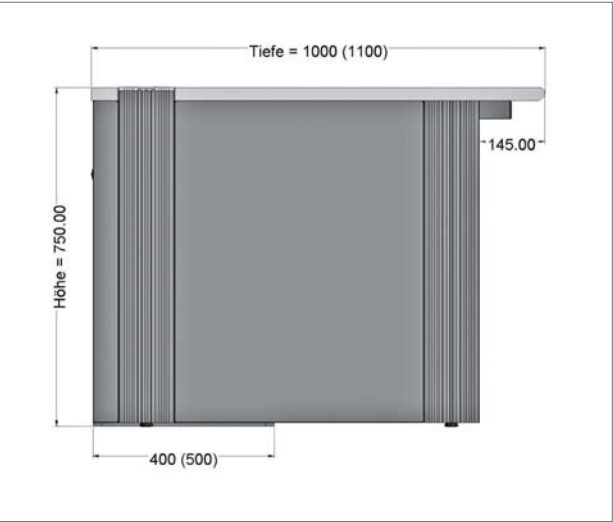
Desktop workspace made out of 30 mm HPL. On the back-end of the space is a 40 mm cassette brush for cable feeds.
Front tabletop with interchangeable, ergonomic FlexiLine front edge in black.
Other worktops and free-form front edges available upon request.

Technical data:	
TaCom widths:	W = 1,200, 1,500, 1,600, 1,800, 2,000 mm
TaCom depths:	D = 1,000/1,100 mm
TaCom height:	H = 750 mm
Standard desktop colour:	RAL7035 light grey
Capacity:	2,000 N (static area load)
TecSafe depth (clearance depth):	D = 400 (360)/500 (460) mm
TecSafe clearance height:	H = 540/640 mm
Standard TecSafe colour:	RAL 7012 basalt grey

Width	Hidden doors	System installation fields	Item no.	
			D = 1,000	D = 1,100
2,000	3	2	P0-1A	P0-2A
1,800	3	2	P0-1B	P0-2B
1,600	2	2	P0-1C	P0-2C
1,500	2	2	P0-1D	P0-2D
1,200	2	1	P0-1E	P0-2E
1,000	1	1	P0-1F	P0-2F
800	1	1	P0-1G	P0-2G

Add-on variants: left- or right-side closing **P.-...X01**
Use in centre **P.-...X02**

Options and accessories:		
19"/12HE module for assembly in TecSafe system build area.	P3-6T	P3-6U
Tec-Safe 19" shelf	P3-6J	P3-6K
PC shelf extendable	P3-6G	P3-6H
Installation board	P3-6D	



Process control station with lowerable monitor area

Tec-Safe substructure for technology integration.
The front and rear cover can be removed using the quick-release fasteners. The substructure contains a toolless, height-adjustable wire tray for cable feeds.
Up to 4 wire trays can be installed if desired.
Furthermore, the substructure can be equipped with 19" modules from the accessories range in order to integrate 19" equipment.
The back-end system profiles can be extended upward in the Open Space system at any time.

Desktop work space made from 30 mm HPL.
Front tabletop with interchangeable, ergonomic FlexiLine front edge.
Other worktops and free-form front edges available upon request.

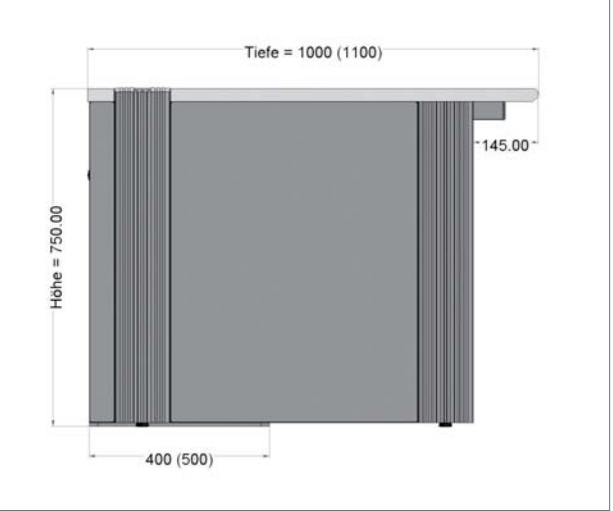
Monitor area can be installed flush with the worktop or recessed to a maximum of 100 mm.
40 mm cassette brush on back-end for cable feed.
Width: table width -300 mm
Depth: 270 mm incl. brush strip

Technical data:	
TaCom widths:	W = 1,200, 1,500, 1,600, 1,800, 2,000 mm
TaCom depths:	T = 1,000/1,100 mm
TaCom heights:	H = 750 mm
Standard desktop colour:	RAL 7035 light grey
Capacity:	2,000 N (static area load)
TecSafe depth (clearance depth):	D = 400 (360)/500 (460) mm
TecSafe clearance height:	H = 540/640 mm
Standard TecSafe colour:	RAL 7012 basalt grey

Width	Hidden doors	System installation fields	Item no.	
			D = 1,000	D = 1,100
2,000	3	2	P1-1A	P1-2A
1,800	3	2	P1-1B	P1-2B
1,600	2	2	P1-1C	P1-2C
1,500	2	2	P1-1D	P1-2D
1,200	2	1	P1-1E	P1-2E

Add-on variants: left- or right-closing **P.-...X01**
Use in centre **P.-...X02**

Options and accessories:		
19"/12HE module for assembly in TecSafe system build area.	P3-6T	P3-6U
Tec-Safe 19" shelf	P3-6J	P3-6K
PC shelf extendable	P3-6G	P3-6H
Installation board	P3-6D	





Process control station with console attachment for front plates

Tec Safe substructure for technology integration.
The front and rear cover is removable using quick-release fasteners. The sub-structure contains a toolless, height-adjustable wire tray for cable feeds. Up to 4 wire trays can be installed as desired. Furthermore the substructure can be equipped with 19" modules from the accessories range in order to integrate 19" equipment.
The back-end system profiles can be extended upward at any time in the Open Space system.

Desktop workspace made from 30 mm HPL.
Cassette brushes on the back-end and on centre in front of console for cable feeds. Front tabletop with interchangeable, ergonomic FlexiLine front edge.
Other worktops and free-form front edges available upon request.

Console attachment angled 20°.
For installing 300 mm front plates.
Maximum device installation depth 150 mm

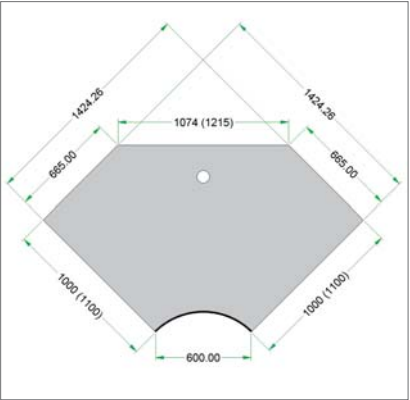
Technical data:				
TaCom width:	W = 1,200, 1,500, 1,600, 1,800, 2,000 mm			
TaCom depth:	D = 1,100 mm			
TaCom height	H = 750 mm			
Standard desktop colour:	RAL 7035 light grey			
Capacity:	2,000 N (static area load)			
TecSafe depth (clearance depth):	D = 400 (360)/500 (460) mm			
TecSafe clearance height:	H = 540/640 mm			
Standard TecSafe colour:	RAL 7012 basalt grey			

Width	Hidden doors	Optional system installation fields	Assembly width	Item no.
2,000	3	2	1,880	P2-2A
1,800	3	2	1,680	P2-2B
1,600	2	2	1,480	P2-2C
1,500	2	2	1,380	P2-2D
1,200	2	1	1,080	P2-2E
1,000	1	1	880	P2-2F
800	1	1	680	P2-2G

Add-on variants:left- or right-closing P.-..X01
Use in centre P.-..X02

Options and accessories:	
19"/12HE module for assembly in TecSafe.	P3-6U
Tec-Safe 19" shelf	P3-6K
PC shelf extendable	P3-6H
optional front plates processed	P9-..
Installation board	P3-6D

Trapezoidal corner element 90°
Front diagonal 600 mm



Tec-Safe substructure for technology integration.
The front and rear cover can be completely removed using quick-release fasteners. The substructure contains a toolless, height-adjustable wire tray for cable feeds. Up to 4 wire trays can be installed as desired. Furthermore, the substructure can be equipped with 19" modules from the accessories range in order to integrate 19" equipment.

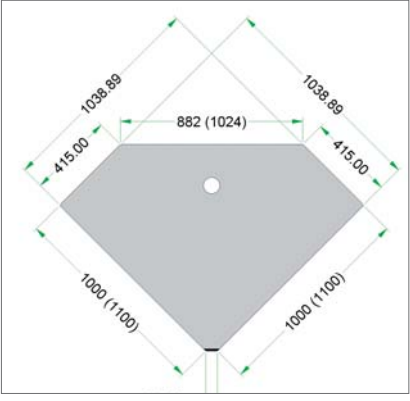
Desktop worktop made out of HPL.
On the centre back-end is an 80 mm cable outlet box for plug and cable feeds.
Front tabletop with interchangeable, ergonomic FlexiLine front edge in black.
Other worktops and free-form front edges available upon request
Colour: black.

Technical data:	
TaCom height:	H = 750 mm
Standard desktop colour:	RAL 7035 light grey
Standard TecSafe colour:	RAL 7012 basalt grey

Depth 1,000 mm
Outer side length 1,424 mm P4-1A

Depth 1,100 mm
Outer side length 1,524 mm P4-2A

Trapezoidal corner element 90°
Front diagonal 55 mm



Design similar to item P4-1A/2A only with 55 mm front diagonal

Depth 1,000 mm
Outer side length 1,038 mm P4-1B

Depth 1,100 mm
Outer side length 1,138 mm P4-2B

Options and accessories:	
19"/12HE module for assembly in TecSafe.	P3-6T
Tec-Safe 19" shelf	P3-6J

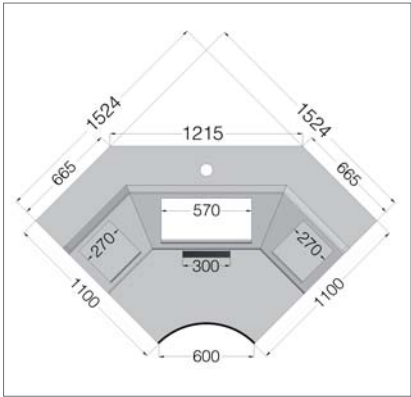


Trapezoidal corner element 90°
Front diagonal
600 mm



Tec-Safe substructure for technology integration. The front and rear cover is removable using quick-release fasteners. The substructure contains a toolless, height-adjustable wire tray for cable feeds. Up to 4 wire trays can be installed as desired. Furthermore the substructure can be equipped with 19" modules from the accessories range in order to integrate 19" equipment.

Desktop worktop made out of HPL. Cassette brushes on the back-end and on centre in front of console for cable feeds. Front tabletop with interchangeable, ergonomic FlexiLine front edge. Other worktops and free-form front edges available upon request.



Console attachment angled 20°. For installing 300 mm front plates. Lateral install depth ea. 270 mm, install depth 60 mm, central install depth 570 mm, install depth 120 mm

Technical data:
TaCom height: H = 750 mm
Standard desktop colour: RAL 7035 light grey
Standard TecSafe colour: RAL 7012 basalt grey

Depth 1,100 mm
Outer side length 1,524 mm

P4-2G

Trapezoidal corner element 90°
Front diagonal
55 mm

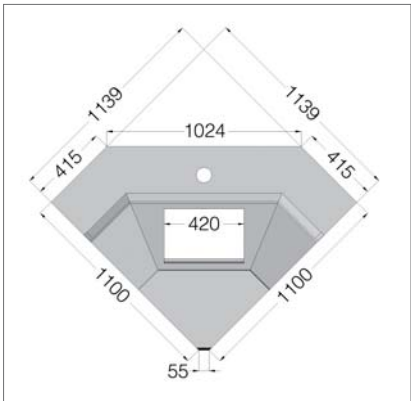


Design similar to P4-2G but with 55 mm front diagonal for depth 1,100 mm

Console attachment angled 20°. For installing 300 mm front plates. The console attachment can be assembled at a width of 420 mm and a maximum install depth of 120 mm. Outer side length 1139 mm

Options and accessories:
19"/12HE module for assembly in TecSafe.

Tec-Safe 19" shelf



P4-2H

P3-6T

P3-6J



Corner element 90°
Front diagonal
600 mm



Tec Safe substructure for technology integration. The front cover is removable using quick-release fasteners. The substructure contains a toolless, height-adjustable wire tray for cable feeds. Up to 4 wire trays can be installed as desired. Furthermore, the substructure can be equipped with 19" modules from the accessories range in order to integrate 19" equipment.

Desktop worktop made out of HPL. On the back-end is an 80 mm cable outlet box for plug and cable feeds. Front tabletop with interchangeable, ergonomic FlexiLine front edge in black. Other worktops and free-form front edges available upon request.

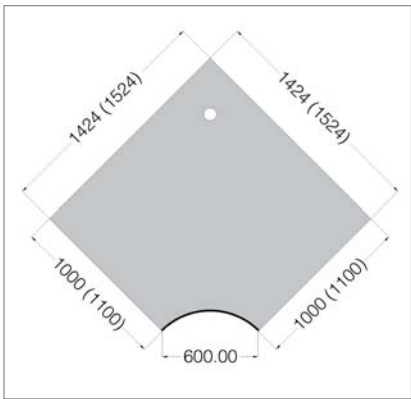
Technical data:
TaCom height: H = 750 mm
Standard desktop colour: RAL 7035 light grey
Standard TecSafe colour: RAL 7012 basalt grey

for depth 1,000
Outer side length 1,424 mm

P4-1C

for depth 1,100
Outer side length 1,524 mm

P4-2C



Corner element 90°
Front diagonal
55 mm



Design similar to P4-1C/P4-2D but with 55 mm front diagonal
for depth 1,000
Outer side length 1,038 mm

P4-1D

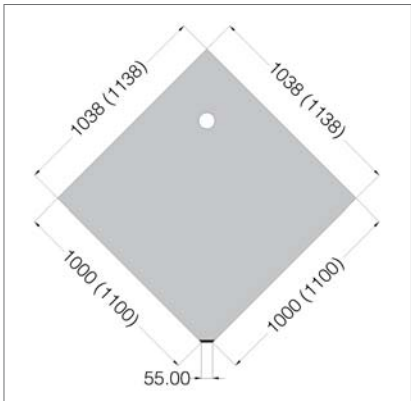
for depth 1,100
Outer side length 1,138 mm

P4-2D

Options and accessories:
19"/12HE module for assembly in TecSafe.
Tec-Safe 19" shelf

P3-6T

P3-6J





Plane 30°
Front diagonal
55 mm



Tec-Safe substructure for technology integration. The front and rear cover is removable using quick-release fasteners. The substructure module contains a toolless, height-adjustable wire tray for cable feeds. Up to 4 wire trays can be installed as desired.

Desktop worktop made out of HPL. On the centre back-end is an 80 mm cable outlet box for plug and cable feeds. Front tabletop with interchangeable, ergonomic FlexiLine front edge in black. Other worktops and free-form front edges available upon request.

Technical data:
TaCom height: H = 750 mm
Standard desktop colour: RAL 7035 light grey
Standard TecSafe colour: RAL 7012 basalt grey

Depth 1,000 mm
Rear edge length 573 mm

P4-4A

Depth 1,100 mm
Rear edge length 624 mm

P4-5A

Plane 45°
Front diagonal
55 mm



Design similar to item P4-4A/5A but with 45° angle element

Depth 1,000 mm
Rear edge length 820

P4-4B

Depth 1,100 mm
Rear edge length 897

P4-5B

Plane 60°
Front diagonal
55 mm



Design similar to item P4-4A/5A but with 60° angle element

Depth 1,000 mm
Rear edge length 1,055 mm

P4-4C

Depth 1,100 mm
Rear edge length 1,155 mm

P4-5C

Plane 15°
Front diagonal
55 mm



Design similar to item P4-4A/5A but with 15° angle element

Depth 1,000 mm
Rear edge length 316 mm

P4-4D

Depth 1,100 mm
Rear edge length 342 mm

P4-5D



Plane 15°
Front diagonal
600 mm with
cable outlet box



TecSafe wood panel for technology integration. The front and rear cover is removable using quick-release fasteners.

Desktop worktop made out of HPL. Front tabletop with interchangeable, ergonomic FlexiLine front edge in black. Other worktops and free-form front edges available upon request.

Technical Data:
TaCom height: H = 750 mm
Standard desktop colour: RAL 7035 light grey
Standard TecSafe colour: RAL 7012 basalt grey

Depth 1,000 mm
Rear edge length 339 mm

P4-4J

Depth 1,100 mm
Rear edge length 313 mm

P4-5J

Plane 30°
Front diagonal
600 mm



Design similar to item P4-4K/5J but with Plane 30° and no back-end hidden door.

Depth 1,000 mm
Rear edge length 82 mm

P4-4K

Depth 1,100 mm
Rear edge length 30 mm

P4-5K

Plane 45°
Front diagonal
900 mm



Design similar to item P4-4K/5J but with Plane 30° and no back-end hidden door.

Depth 1,000 mm
Rear edge length 135 mm

P4-4L

Depth 1,100 mm
Rear edge length 58 mm

P4-5L

Plane 60°
Front diagonal
1,100 /
1,200 mm



Design similar to item P4-4K/5J but with Plane 30° and no back-end hidden door.

Depth 1,000 mm
Rear edge length 135 mm

P4-4M

Depth 1,100 mm
Rear edge length 58 mm

P4-5M



19"/13HE
Equipment
cabinet



Wooden body with front- and back-end hidden doors. The 19" vertical system grid beams and a pair of track guides are already integrated. Covered with a TaCom^{SP} desktop worktop with rear cable outlet box . External dimensions:
W = 595 mm x D = 1,000 mm x H = 750 mm
W = 595 mm x D = 1,100 mm x H = 750 mm

1 pair of steel track guides
D = 425 mm, fits P3-7D hardware cabinet
D = 525 mm, fits P3-7E equipment cabinet

Includes assembly materials for mounting on housing grid tracks, comes with 4 M6 cage nuts for mounting.

P3-7D
P3-7E

P3-6W
P3-6X

Side corner
shelf

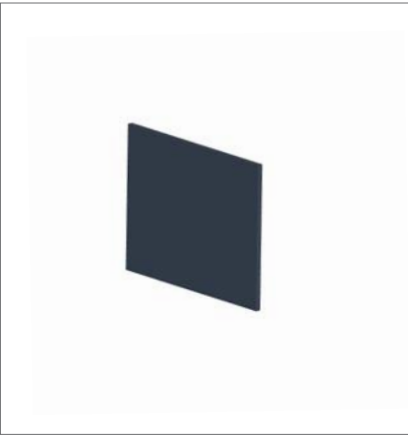


Wood body made from 19 mm direct-layer clipboard, hid-
den door on back-end. Interior divided with 32 mm Euro-
grid. Covered with a TaCom^{SP} desktop worktop and rear
cable outlet box. The usable body depth from front side is
D = 600 mm. The remaining depth can be used for cable
feeds. Unit incl. 2 height-adjustable shelves.
Unit dimensions: W = 595 mm x H = 750 mm

for depth 1,000 mm open version
for depth 1,100 mm open version

P3-7F
P3-7G

Cabinet screens



Cabinet panel for covering the side of an equipment cabi-
net or side shelf during set-up to finish a combination con-
sisting of a 25 mm direct-layer chioboard
Side wall cover for Type P3-7D/P3-7F
Side wall cover for Type P3-7E/P3-7G

with mounting material
W = 926 mm x D = 25 mm x H = 720 mm

P3-7D X01
P3-7E X01

Interlock
screens



Joint panel for filling gaps between hardware areas created
by control room element rows.
W = 72 mm, H = 720 mm

P4-7A

Joint panel for filling gaps between e.g. control room ele-
ments placed along a wall.
W = 36 mm, H = 720 mm

P4-7B

Console housing
with electromo-
tive tilt



Console housing for integrating touchscreen monitors up to
15" and other control elements.
Electromotive actuator. Compatible with Type P9-1... front
plates with 300 mm in height
Powder coated metal housing, fully sealed even in fully
deployed condition. Extensive back-end with ventilation slits
for cooling installed devices.

Technical data:
External dimensions: W = 540 mm , D = 480 mm
Tilt range: 20 - 45°
Front plate installation
dimensions: W = 370 mm , H = 300 mm
Maximum device install depth: H = 70 mm
Standard colour: RAL 7012 basalt grey

P3-3X

3HE - 19"
Housing



Insert plate for TaCom console, designed as 3HE/19" hous-
ing for integrating insert plates and inserts from the 19"
system.
Maximum insert depth 400 mm.
W = 570 mm, H = 300 mm, S = 3 mm.

P9-3HE19INCHW570

3HE - 72TE
Rack mount



Insert plate for TaCom console, designed as rack mount
for integrating insert plates and inserts from the 3HE
Eurocassette system.
H = 300 mm, S = 3 mm.

P9-3HE..TE..

Please specify TE number when ordering.

Front plates



Front plates H = 300 mm.

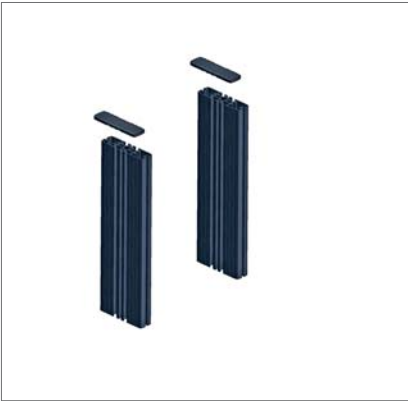
Width 100 mm	Width 210 mm
Width 235 mm	Width 270 mm
Width 280 mm	Width 345 mm
Width 370 mm	Width 420 mm
Width 470 mm	

Please include width in order.
Example: P9-1A W210
Customer-facing control devices can be integrated into
the front plate as desired.

P9-1A B...



TaComSP expansion beams



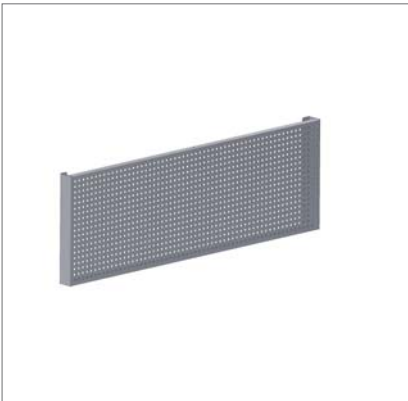
The back-end system profiles can be expanded upward as needed using Open Space technology. The form- and force-fit interlocking allows the extended beam to withstand extreme pressure. For housing functional shelves, crossbeams, privacy and noise blocking panels as well as accessory adapters. Comes in pair with assembly material and plastic cap covers.

Standard beam colour: RAL 7012 basalt grey

Beam dimensions: W = 34 mm x D = 123 mm

System expansion beam, pair	H = 400 mm	P3-6V
System expansion beam, pair	H = 408 mm	P3-6V X01
System expansion beam, pair	H = 422 mm	P3-6V X02
System expansion beam, pair	H = 800 mm	P3-6V X03

Visual protection screen



Metal visual protection screen
H = 400 mm
for back-end assembly on system profiles.
Colour: white aluminium

fits		
Module 2000	W = 1,996 mm	P3-8A
Module 1800	W = 1,796 mm	P3-8B
Module 1600	W = 1,596 mm	P3-8C
Module 1500	W = 1,496 mm	P3-8D
Module 1200	W = 1,196 mm	P3-8E

Corner visual protection screens

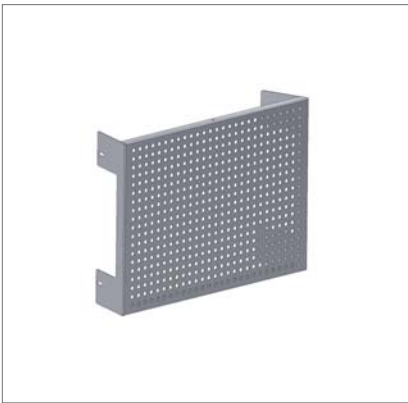


Metal visual protection screen for 90° corner element
H = 400 mm
Colour: white aluminium

fits corner element		
P4-1A		P3-8F
P4-2A/P4-2G		P3-8G
P4-1B		P3-8H
P4-2B/P4-2H		P3-8J

For assembly on back-end system profiles on corner elements placed next to process control stations.

Visual protection screen



Metal visual protection screen for angle elements
H = 400 mm
Colour: white aluminium

30° visual protection screen fits angle element P4-4A	P3-8K
30° visual protection screen fits angle element P4-5A	P3-8L
45° visual protection screen fits angle element P4-4B	P3-8M
45° visual protection screen fits angle element P4-5B	P3-8N
60° visual protection screen fits angle element P4-4C	P3-8P
60° visual protection screen fits angle element P4-5C	P3-8Q

For assembly on back-end system profiles on angle elements placed next to process control stations.

Visual protection screen with pinboard



Noise dampening and can also be used as a pinboard. For assembly on back-end Elabo system profiles, consists of a fabric-covered soft fibre board in a powder coated metal frame.

Height = 355 mm
Fabric covering colour: aubergine
Metal component colour: basalt grey

Fits		
Module 2000	W = 1,996 mm	P3-8A X02
Module 1800	W = 1,796 mm	P3-8B X02
Module 1600	W = 1,596 mm	P3-8C X02
Module 1500	W = 1,496 mm	P3-8D X02
Module 1200	W = 1,196 mm	P3-8E X02

Visual protection screen



For assembly on back-end Elabo system profiles. Closed clamshell construction, overall size approx. 20 - 24 mm. Certified perforation as per DIN EN 20354. Inlaid DIN EN 13501-1 sound dampening material for noise absorption
Height = 350 mm
Colour: white aluminium RAL 9006

Fits		
Module 2000	W = 1,996 mm	P3-8A X03
Module 1800	W = 1,796 mm	P3-8B X03
Module 1600	W = 1,596 mm	P3-8C X03
Module 1500	W = 1,496 mm	P3-8D X03
Module 1200	W = 1,196 mm	P3-8E X03

Functional shelves



For assembly between two system profiles. Front and rear of shelf edged with extruded aluminium profiles. Shelf tiltable up to max. 30°. Plastic edging strip on front side.

Standard shelf colour: RAL 9006 white aluminium

Shelf dimensions: D = 400 mm x S = 34 mm

Capacity (area load): up to 1,600 mm width 80 kg
up to 2,000 mm width 60 kg

Module 2000	W = 1,928 mm	P3-7P
Module 1800	W = 1,728 mm	P3-7Q
Module 1600	W = 1,528 mm	P3-7R
Module 1500	W = 1,428 mm	P3-7S
Module 1200	W = 1,128 mm	P3-7T

Cover board



Cover board for assembly on system profiles.
Laminated shelf board assembled on stable metal cross-beams.
Colour: white aluminium
Depth = 210 mm

W = 2,000 mm
W = 1,800 mm
W = 1,600 mm
W = 1,500 mm
W = 1,200 mm

P3-9A
P3-9B
P3-9C
P3-9D
P3-9E

Corner cover board



Corner cover board
fits over angle element
Colour: white aluminium

		Width	Depth	
P4-4A	30°	578	203	P3-9K
P4-4B	45°	828	194	P3-9L
P4-4C	60°	1065	182	P3-9M
P4-5A	30°	630	203	P3-9N
P4-5B	45°	905	194	P3-9P
P4-5C	60°	1165	182	P3-9Q

Document enclosure



Document enclosure, optional desktop design for process control stations, consists of a flush-mounted 4 mm thick non-reflecting safety glass plate laid in the tabletop for setting any kind of document up to DIN A4.

W = 850 mm, D = 300 mm, H = 4 mm

P3-3S

Type 1 TFT
hinged arm



Aluminium monitor support arm.
Height and range continuously adjustable.
Gas pressure technology for easy height adjustment.
Quick-release monitor mounting.
Range 365 mm
Vesa standard 75/100
Support capacity 7-15 kg

P3-5M-1

Type 2 TFT
hinged arm



Aluminium monitor support arm.
Height and range continuously adjustable.
Gas pressure technology for easy height adjustment.
Quick-release monitor mounting.
Range 515 mm
Vesa standard 75/100
Support capacity 7-15 kg

P3-5M-2

Type 3 TFT
hinged arm



Aluminium monitor support arm.
Height and range continuously adjustable.
Gas pressure technology for easy height adjustment.
Quick-release monitor mounting.
Range 515 mm
Vesa standard 75/100
Support capacity 7-15 kg

P3-5M-3

TFT hinged arm
Table mount



Table mounting for attaching TFT swivel arm directly to table.
3 mounting types available:
- Desk clamps (as shown)
- Cable hole mount
 (avg. 80 mm hole required)
- Drill screw mount
 (12 mm holes required)

P3-5N-1

TFT crossbeam



For assembly between two system profiles. Continuously adjustable height assembly. The crossbeam serves to seat TFT ball joints, TFT arms, organisational elements or other adaptations.

Standard crossbeam colour: RAL 9006 white aluminium

Crossbeam dimensions: H = 124 mm x D = 30 mm fits

Module 2000	W = 1,928 mm
Module 1800	W = 1,728 mm
Module 1600	W = 1,528 mm
Module 1500	W = 1,428 mm
Module 1200	W = 1,128 mm

P3-6N
P3-6P
P3-6Q
P3-6R
P3-6S

TFT corner beam



For assembly between two system profiles on corner elements. Other design similar to crossbeam.

Corner beam dimensions: H = 124 mm x D = 30 mm fits

90° TFT crossbeam P4-2B	W = 1,488 mm
30° TFT crossbeam P4-4A	W = 528 mm
45° TFT crossbeam P4-4B	W = 753 mm
60° TFT crossbeam P4-4C	W = 958 mm
30° TFT crossbeam P4-5A	W = 578 mm
45° TFT crossbeam P4-5B	W = 828 mm
60° TFT crossbeam P4-5C	W = 1,058 mm

P3-6S ZP4-2B
P3-6S ZP4-4A
P3-6S ZP4-4B
P3-6S ZP4-4C
P3-6S ZP4-5A
P3-6S ZP4-5B
P3-6S ZP4-5C

TFT swivel head adapter



Ball coupling adapter with back-end metal mounting brackets for assembly on metal crossbeam. Polydirectionally tiltable seat plate as per VESA standard.

Swivel head colour:

Gelenkkopf:	black
Optional:	white aluminium

Max. load capacity: 15 kg

VESA adapter: 75x75 mm and 100x100 mm

Adapter dimensions: W = 60 mm x D = 140 mm x H = 60 mm

fits Type P3-6... TFT crossbeams

Quick-release ball adapter

P3-5A X01

TFT swivel head rotation adapter



Rotation adapter for assembly on Type P3-6N...S crossbeams

P3-5N-4

Stand beam



Stand beam for TFT

Stand beam for mounting on any tabletop with an avg. 80 mm cable outlet box.

Capacity 12 kg.

TFT stand beam H = 445 mm

TFT stand beam H = 845 mm

Stand beam for mounting on tabletops using desk clamps.

Clamp range 14 mm - 40 mm

Overall height 445 mm, capacity 12 kg

P3-5B
P3-5B-1

P3-5C

TFT Swivel arm



2x TFT swivel arm

Height-adjustable assembly on Type P3-5B/5C TFT stand beams

For VESA mounting 75/100 x 75/100 mm. black with quick-release.

Max. capacity 15 kg

Range 105 mm - 480 mm

P3-5K

TFT ball coupling



TFT ball coupling

Height-adjustable assembly on Type P3-5B/5C TFT stand beams

For VESA mounting 75/100 x 75/100 mm. black with quick-release.

Max. capacity 15 kg

P3-5L

TFT hinged arm Swivel adaptor



Rotation adapter for assembling on Type P3-5B/5C TFT stand beams

Design for assembling on info system profiles

Articulated arm - rotation adapter

P3-5N-2

P3-5N-3

Telephone swivel arm



Telephone swivel arm fits all current telephones. includes 18 mm - 74 mm desk clamp
Colour: black

P3-5Q

Design office lamps



Work station lamp, 11 watts.
The exclusive work station lamp consists of a compact fluorescent lamp with prismatic cover. The specially developed desk lamp lenses scatter the point light and provide even glare-free work station illumination. A medium illumination strength of 450 lux is provided across a 60 x 60 cm surface and at a distance of 50 cm from the lamp head.
Colour: anodised aluminium colour

P3-5R

Shapely LED office lamp



LED office work station lamp, 8 watts

Sensor switch operation controls gradual lamp dimming. Gas pressure springs allow you to position the lamp using only one hand. Self-inhibiting hinges keep it in the desired position.

Lamphead, support arm and stand made out of power coated aluminium.

P3-5T

Shapely office lamp



Universal work station lamp, 36 watts
This exclusive work station lamp consists of a compact fluorescent lamp.
Incl. 0-65 mm desk clamp.
Colour: anodised aluminium colour

P3-5S

Crossbeam duct



Horizontal cable duct for assembly on flat-screen retaining consoles. Brush strips allow cable feeds.
Depth = 98 mm, height = 80 mm

Module 2000 W = 1,914 mm
Module 1800 W = 1,714 mm
Module 1600 W = 1,514 mm
Module 1500 W = 1,414 mm
Module 1200 W = 1,114 mm

P5-6N
P5-6P
P5-6Q
P5-6R
P5-6S

Riser duct



For back-end assembly on aluminium multi-groove beams for feeding cable to the cable tray.
Made out of powder coated sheet steel.

Colour variants: RAL 7012 basalt grey

Fits Type TaCom Basic P6-1...

H = 312 mm, W = 100 mm, D = 90 mm

P3-8V

Duct cover screen



To provide a side cover for the standard series cable duct of Type Basic model variants.

Colour variants: RAL 7012 basalt grey

Fits Type TaCom Basic P6-1...

H = 408 mm, W = 58 mm, D = 30 mm

P3-8Y

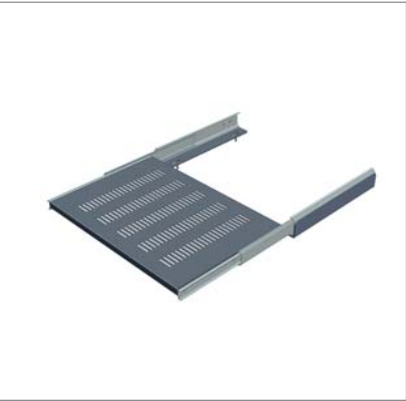
Wire cable tray



Metal wire cable tray for horizontal wiring. Open, galvanised wire tray for assembly on vertical TecSafe system supports, incl. mounting material. Colour: galvanised
Dimensions: D = 120 mm x H = 70 mm
fits

Tabletops			Front corner panels	
Width	Length	Order no..	No.	Order no.
2,000 mm	1,805 mm	P3-7U	P4-1A	P3-7J
1,800 mm	1,605 mm	P3-7V	P4-1B	P3-7K
1,600 mm	1,405 mm	P3-7W	P4-1C	P3-7L
1,500 mm	1,305 mm	P3-7X	P4-1D	P3-7M
1,200 mm	1,005 mm	P3-7Y	P4-4A/5A	P3-7N

(PC-) shelves extendable

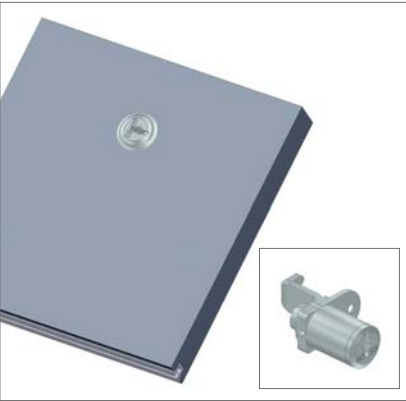


Extendable metal shelf for devices and components for quick access. Metal shelf for improved air circulation and mounting slotted devices. Assembly on base plate of Tec-Safe area.
Extension capacity max. 50 kg.

Extendable shelf
for depth 1,000 mm: W = 500 mm x D = 350 mm
for depth 1,100 mm: W = 500 mm x D = 420 mm

P3-6G
P3-6H

TecSafe locking options



The front and rear TecSafe covers are removable quick pressure release fasteners as standard. The quick pressure release can also be replaced by a lock to make sabotage and unauthorised equipment access more difficult.

Additional charge for each lock, simultaneous locking
Additional charge for each lock, non-simultaneous locking
Additional charge for version with compression lock (3 mm two-way key bit)

P3-7H
P3-7H X01
P3-7H X02

19" 12 HE expansion set



19" grid rail set for vertical assembly in extruded aluminium profiles TecSafe grid. The grid profiles serve to mount 19" built-in plates and devices. Can be assembled either in front or in back of TecSafe. 12HE includes 1 pair of track guides.

Distance between grid profile and hidden door
front = 45 mm, back = 29 mm

fits TaCom^{SP} depths 1,000 (TecSafe 400 mm)
fits TaCom^{SP} depths 1,100 (TecSafe 500 mm)
19"-10HE fits TaCom^{SP} Types P3-3L/M/N
19"-10HE fits TaCom^{SP} Types P3-1.../P3-3...

P3-6T
P3-6U
P3-6T X01
P3-6T X02

19" track guides (pair)



1 pair of steel track guides

Includes assembly materials for mounting on housing grid tracks, comes with 4 M6 cage nuts for mounting.

D = 225 mm, fits 19" Module P3-6T
D = 325 mm, fits 19" Module P3-6U
D = 178 mm, fits 19" Module P3-6TX02

P3-6Y
P3-6Z
P3-6Y X02

19" built-in shelf

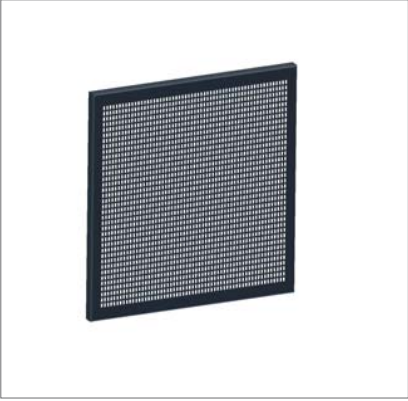


19" shelf fits in TaCom^{SP} 19" modules together with track guides.

D = 225 mm, fits track guide pair P3-6Y
D = 325 mm, fits track guide pair P3-6Z

P3-6J
P3-6K

Installation board



Perforated metal installation board for installing various devices, expanding circuits, cabling, etc. With 5x10 mm rectangular perforation, for assembly in TecSafe
Colour: basalt grey RAL7012

W = 520 mm, D = 25 mm, H = 539 mm

W = 520 mm, D = 25 mm, H = 525 mm
(for *Lift* process control stations)

P3-6D

P3-6D X01

Special anchor set



5x10 mm special plastic anchors packaged in 100 pcs.

65-2G

Socket strip
Switch
System 60



Power strip system 60
including power input plug for mains connection and
directly bypassed power outlet socket. The sockets are
designed for plugs angled at 45°. Strip built out of impact-
resistant, halogen-free plastic, black.
3 x (5x) Schuko sockets
1 x 2-pole illuminated On/Off switch

Socket strip	3 sockets	C1-8C
Socket strip	5 sockets	C1-8D

Surge protec-
tor filter



Safety module System 60
for securing the System 60 power strip
max. 16 A/230 V

6.5kA surge protector with operation and failure indicator,
power input GST 18,
Power output GST 18

P9-7M

6.5kA surge protector with operation and failure indicator
and 30MHz line filter

P9-7N

Power input GST 18, power output GST 18

Power cable
System 60



Power cable System 60
One side with safety plug. Other side with power outlet
socket (GST 18) for direct power strip/1-phase switch box
contact.

Length	2,000 mm	C1-8V ZL200
Length	3,000 mm	C1-8V ZL300
Length	4,000 mm	C1-8V ZL400

Power connec-
tion cable
System 60



Power connection cable System 60
for connecting two power strips equipped with the GST18
plug system.

Length	500 mm	C1-8W ZL50
Length	1,000 mm	C1-8W ZL100
Length	2,000 mm	C1-8W ZL200
Length	3,000 mm	C1-8W ZL300

Heat sink with
filter



Heat sink with plastic grid and integrated filter insert.
The heat sink produces excess pressure in the TecSafe. Air outlet
filters can be integrated for directed air circulation. For back-end
installation on the TecSafe rear wall.
Electrical connection through a GST 18 connector and power
source with Schuko plug.
Specifications: AC 230 V/50 Hz/19 W
Plastic grid colour: black
Dimensions: W = 148 mm x D = 70 mm x H = 148 mm

Heat sink with plastic grid and filter insert
Heat sink exit filter with plastic grid and filter insert
Replacement filter insert

Note:

If fan modules are to be integrated into the pedestal housing the
technical equipment, the index -L is added to the item number of
the respective control station element. For example: Px-xx (stand-
ard design, i.e. technical equipment pedestal not ready to accept
fan modules)
>> Px-xx-L (technical equipment pedestal ready for installation of
fan modules)

Integrated
socket



Turn 3 built-in socket
for installation in a tabletop or similar.

P9-7P

Equipment:
2x Schuko socket
1x outlet 2xRJ45/Cat.5 with 3.5 m patch cable
includes 2 m power cable with Schuko plug.

W = 270 mm, D = 109 mm, H = 92 mm

Potential
equalisation

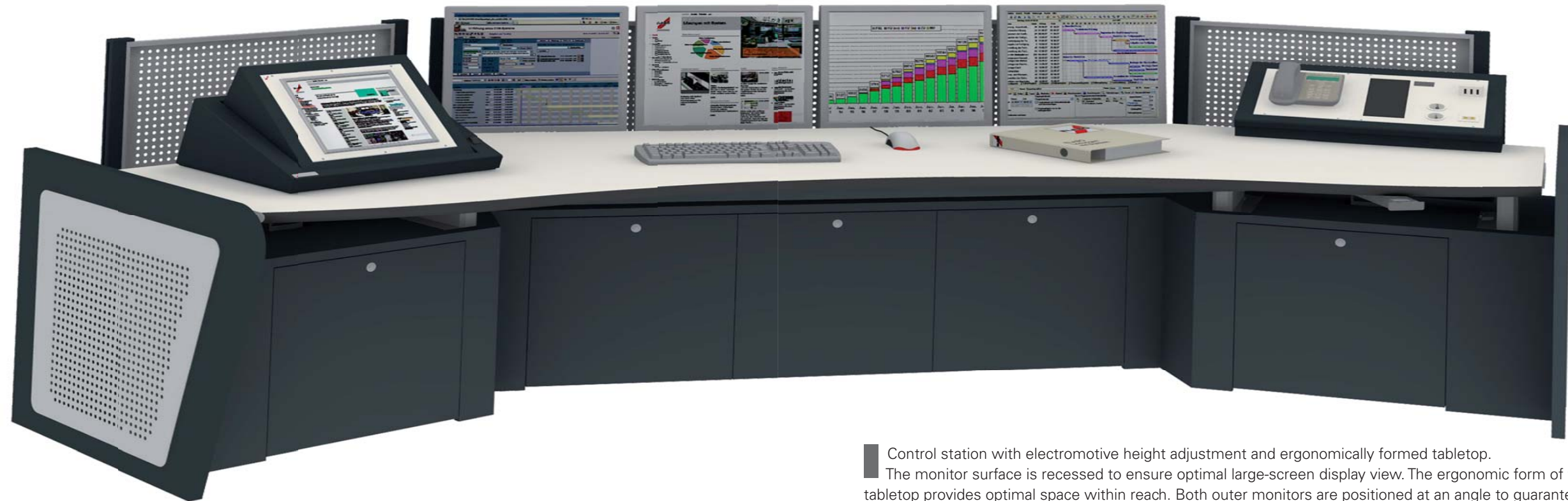


Potential equalisation/grounding for equipment areas
Integration of all metallic components in potential equali-
sation, including potential equalisation tracks in substruc-
ture. Installation of potential equalisation is required per
equipment area.

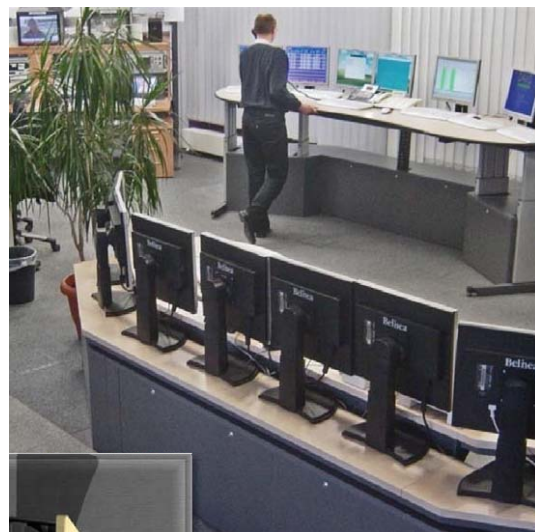
TaCom^{SP} *Lift*

Optimum concentration through perfect ergonomics

Elabo TaCom Lift process control stands offer maximum ergonomics. The entire work area can be electromotively height-adjusted for body size and helps prevent early fatigue due to improper posture. Alternating between sitting and standing work posture is possible at any time. Saved positioning in the controls allows changing shifts to permanently programme individual work positions.



Control station with electromotive height adjustment and ergonomically formed tabletop. The monitor surface is recessed to ensure optimal large-screen display view. The ergonomic form of the tabletop provides optimal space within reach. Both outer monitors are positioned at an angle to guarantee optimal view.



A relaxed posture at the work station and alternating between standing and sitting not only prevents health complications, but also helps more efficiently plan work. Studies have shown that stress situations can be better resolved while standing.



Cable carriers lead cables from the TecSafe to the work space optimally and conservatively. Four linear actuators ensure even and sufficient power to adjust the height of the entire work space.

TaCom^{SP} Lift

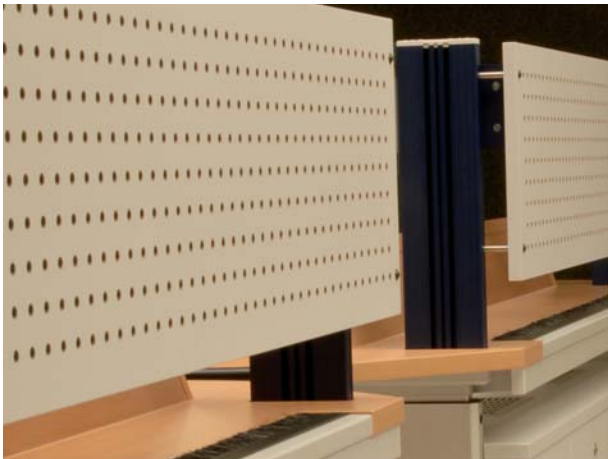
simply more

A successful room setup is achieved by a number of perfectly harmonised details. Beyond the standard, Elabo offers solutions such as height-adjustable monitor walls that always ensure optimum view. Of course visual protection and noise insulation walls are also available. These are all the more interesting, as Elabo noise insulation walls can also be used as pinboards.



When you adjust the height of the process control station, it only follows to adjust the central monitors as well. The height-adjustable monitor wall, modularly built and with enormous support capacity, provides optimum visibility from any position. Always.

The TaCom^{SP} Lift process control station controls offer ergonomics at the press of a button. Control Station models come with height display and 3 position memory files.



Concentration is essential. Visual protection and noise insulation walls make sure that concentration remains intact, and the height-adjustable variants ensure this in any position. With Elabo noise insulation walls, interior noise simply fizzles out.

TFT monitors are the main components of control rooms. That is why they must always be in view of the operator. The flexible configuration allows for problem-free individual adjustments at any time using Elabo adapters.



Shapely edges improve optics on the one hand - but also assist in ergonomics. Protected by a stable design edge that can also be changed out, Elabo process control stations are always visually attractive.





Electromotive height-adjustable process control station for administrative tasks

Tec-Safe substructure for technology integration.
The front and rear cover can be removed using quick release fasteners.
The underside is equipped with a wire tray for cable feeds.

Desktop worktop made out of HPL. On the back end is a 40 mm cassette brush to allow access to the wiring level underneath.
Front tabletop with interchangeable, ergonomic FlexiLine front edge in black.
Other worktops and free-form front edges available upon request.

Technical data:		
TaCom widths:	W = 1,500, 1,600, 1,800, 2,000 mm	
TaCom depths:	D = 1,000 mm	
TaCom heights:	H min. = 740 mm;	
	H max. = 1,135 mm	
Max. area load:	100 kg	
Travel speed:	16 mm/s	
Standard desktop colour:	RAL 7035	

TecSafe depth (clearance depth):	T = 400 (350)
TecSafe clearance height:	H = 525 mm
Standard TecSafe colour:	RAL 7012 basalt grey

Width	Hidden doors	System installation fields	Item no.
2,000	3	2	P3-1A
1,800	3	2	P3-1B
1,600	3	1	P3-1C
1,500	3	1	P3-1D
1,200	2	1	P3-1E
1,000	2	1	P3-1E ZB 1,000

Options and accessories:

PC shelf extendable	P3-6G
Visual protection screen	P3-8.. X01
TFT stand beam	P3-5C
Perforated steel installation board	P3-6D X01



Electromotive height-adjustable process control station for housing control and monitoring elements.

TecSafe substructure for technology integration.
The front and rear cover can be removed using quick release fasteners.
The underside is equipped with a wire tray for cable feeds.

Desktop worktop made out of HPL. On the back end is a 40 mm cassette brush to allow access to the wiring level underneath.
Front tabletop with interchangeable, ergonomic FlexiLine front edge in black.
Other worktops and free-form front edges available upon request.

Console attachment with 20° front tilt, over entire table width, for integrating front plates with a height of 300 mm.
Max. device install depth 160 mm.

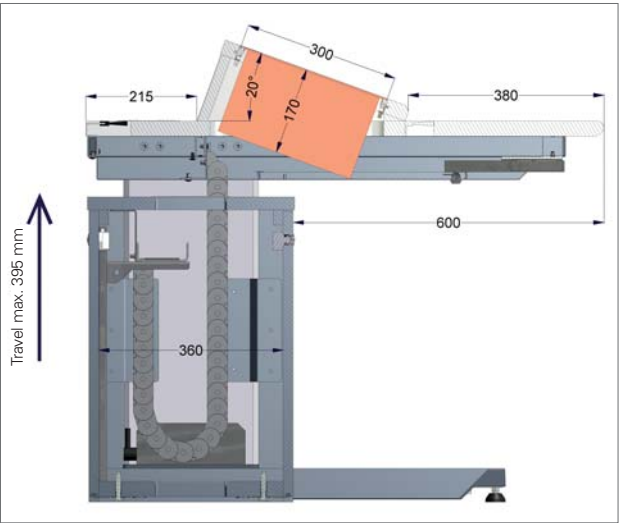
Technical data:		
TaCom width:	W = 1,500, 1,600, 1,800, 2,000 mm	
TaCom depth:	T = 1,000 mm	
TaCom height:	H min. = 740 mm , H max. =1,135 mm	
Max. area load:	100 kg	
Travel speed:	16 mm/s	
Standard desktop colour:	RAL 7035 light grey	

TecSafe depth (clearance depth):	T = 400 (350)
TecSafe clearance height:	H = 525 mm
Standard TecSafe colour:	RAL 7012 basalt grey

Width	Hidden doors	System installation fields	Assembly width	Item no.
2,000	3	2	1,880	P3-3A
1,800	3	2	1,680	P3-3B
1,600	3	1	1,480	P3-3C
1,500	3	1	1,380	P3-3D
1,200	2	1	1,080	P3-3E

Options and accessories:

PC shelf extendable	P3-6G
Visual protection screen	P3-8.. X01
TFT stand beam	P3-5C
Perforated steel installation board	P3-6D X01



Electromotive height-adjustable process control station

Tec-Safe substructure for technology integration. The front and rear cover is removable using quick-release fasteners. The underside is equipped with a wire tray for cable feeds. Removable screens on the sides. The central underside is equipped with a 5x power strip with switch. To the left and right are 3x power strips. All power strips come pre-wired. Sockets with protection are also available if desired. Additionally, the outer equipment area is equipped with potential equalisation tracks.

Desktop worktop made out of HPL on the front with a free-form edge and interchangeable, ergonomic Flex-iLine front edges in black. Other worktops available upon request. Back end contains TFT area that can be recessed up to 100 mm, with rear-opening cable ducts for cable feeds in docked cable handlers that run directly to the equipment area.

Synchronous control with 2-button hand control and memory function adjust the height of the work space.

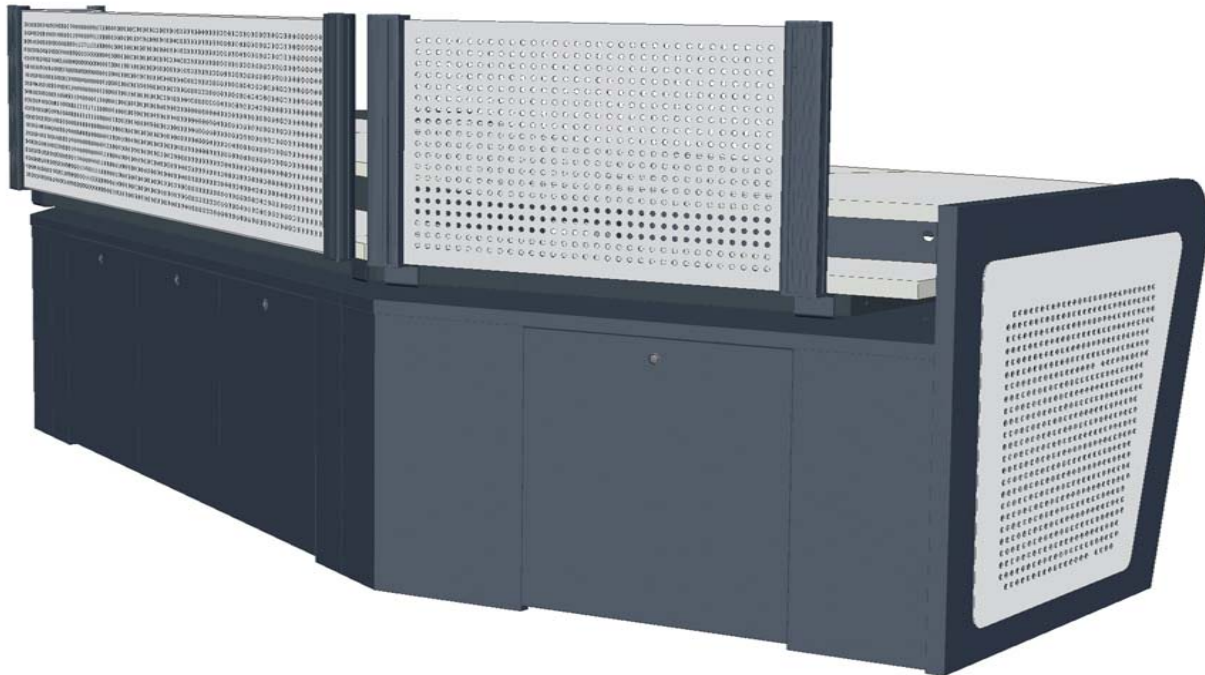
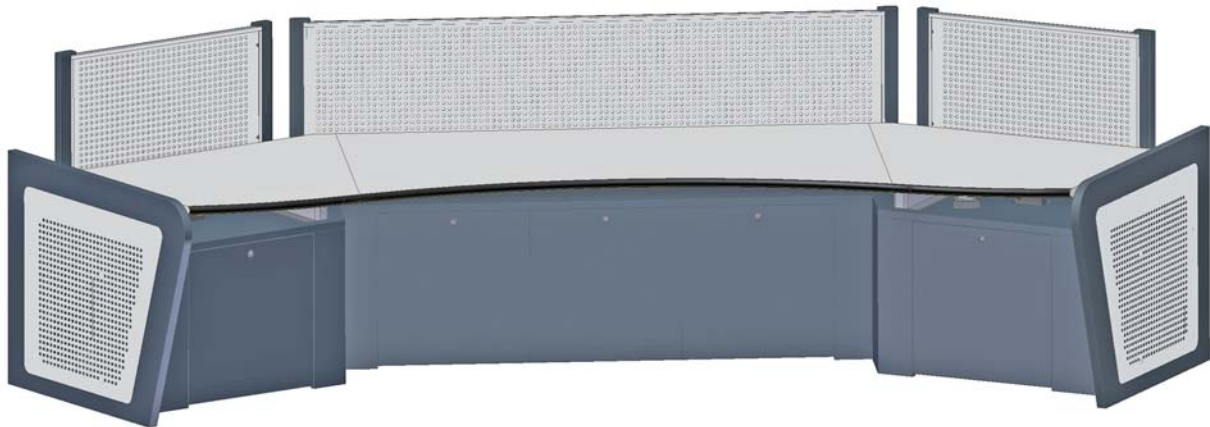
Technical data:

Table depth 1,435 mm
Table height min. 740 mm
Table height max. 1,135 mm
max. permitted area load: 200 kg
Travel speed 16 mm/s
Right and left segment width 980 mm

Version small **P3-3L**
Central segment width 1,200 mm
Overall width 3,350 mm

Version middle **P3-3M**
Central segment width 1,700 mm
Overall width 3,850 mm

Version large **P3-3N**
Central segment width 2,200 mm
Overall width 4,350 mm





Electromotive height-adjustable process control station

TecSafe substructure for technology integration. The front and rear cover is removable using quick-release fasteners. The underside is equipped with a wire tray for cable feeds.

Desktop worktop made out of HPL in front with free-form edge and interchangeable, ergonomic FlexiLine front edge in black. Other worktops available upon request. On the back end is a TFT area that can be recessed up to 50 mm with rear-opening cable ducts for cable feeds in docked cable handlers that run directly to the equipment area.

Synchronous control with 2-button hand control and memory function adjust the height of the work space.

Other worktops and free-form front edges available upon request.

Visual protection screen

The back side is equipped with a perforated visual protection screen that runs the entire width.

Visual protection screen height 450 mm.

Colour: white aluminium U516

Technical data:

TaCom width:	W = 2,710 mm
TaCom depth:	D = 1,340 mm
TaCom height:	H min. = 740 mm, H max. = 1,135 mm
max. area load:	200 kg
Travel speed:	8 mm/s
Standard desktop colour:	RAL 7035 light grey

TecSafe depth (clearance depth):	D = 580 (540/430) mm
TecSafe clearance height:	H = 485 mm
Standard TecSafe colour:	RAL 7012 basalt grey

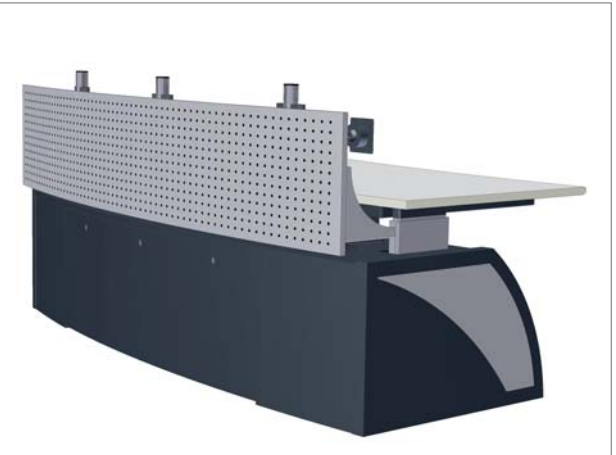
Order number:

P3-4A

Options and accessories:

TFT stand beam

P3-5C



Monitor wall



Lift monitor wall - remote-controlled, electromotive height-adjustment.

W = 1,620 mm, D = 450 mm,
H = 2,400 – 2,900 mm.

Overall travel	395 mm
Travel speed	16 mm/s
max. permitted load	1,200 N (120 kg)
remote-controlled	

P3-3Q

Equipment container



Equipment container for connecting to Type P3-3... process control rooms. Suited for housing 3 tower PCs with a width of 180 mm

W = 700 mm
D = 920 mm
H = 750 mm

Front doors removable, closes via push lock fitting

P3-3P

Console attachment housing



Console housing with a 20° front tilt, for installing Type P9-1 front plates.
The max. installable width is 540 mm, the max. device install depth is approx. 70 mm.
The console housing is suited for assembly in Type Series P3-3L, -3M and 3N process control rooms
The housing is fixed to the desktop using desk clamps, wiring remains hidden using the control room cable ducts.

W = 579 mm , D = 483 mm , H = 287/187 mm

P3-3T

TaCom^{SP}

Elabo offers all products necessary for setting up professional, functional process control rooms. Rolling base cabinets offer storage directly at the work station. Side cabinets allow function areas in larger rooms to be easily divided. In the event that more storage space is needed, Elabo offers total cabinets that can also be used as room dividers. Chairs suitable for 24-hour use round out the programme.

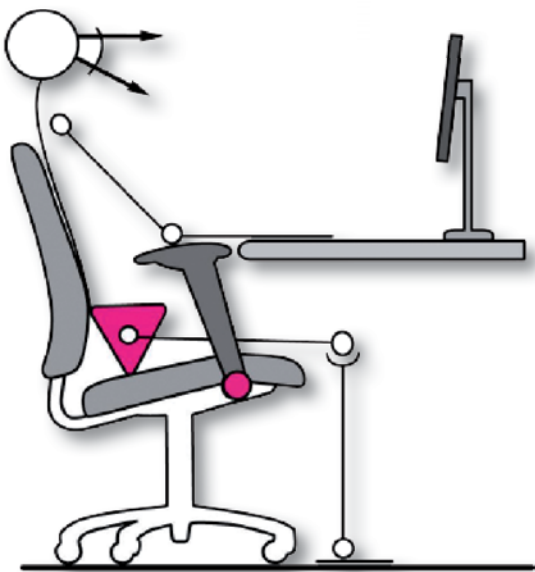
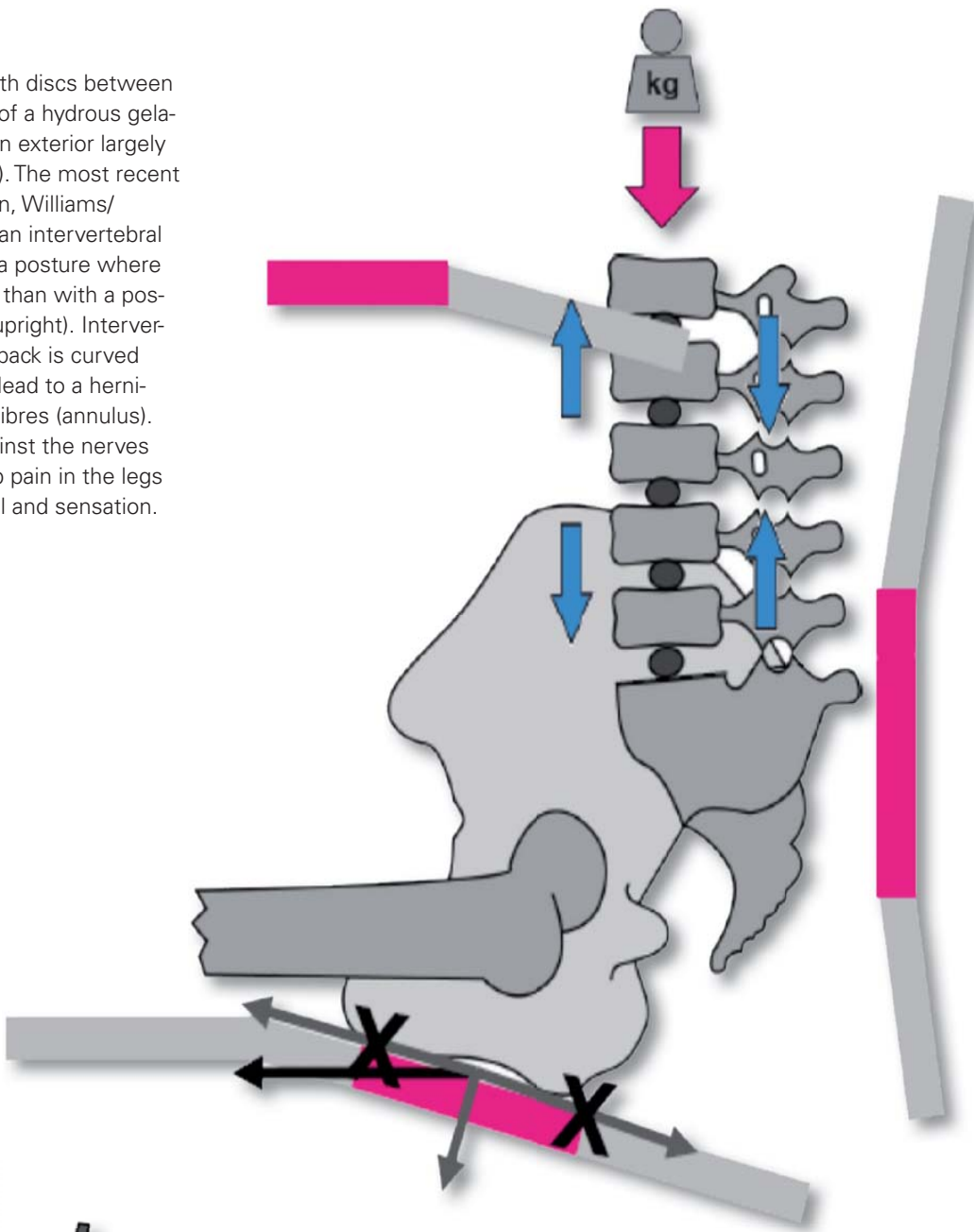
Complete setup



Health

Spinal anatomy

The spine consists of 24 vertebrae with discs between them. An intervertebral disc consists of a hydrous gelatine nucleus (nucleus pulposus) and an exterior largely comprised of collagen fibres (annulus). The most recent studies (Wilke, Andersson/Nachmeson, Williams/McKenzie) show that the pressure in an intervertebral disc in the lower back is greater with a posture where this area is curved outward (rounded) than with a posture with a slight curvature (straight, upright). Intervertebral discs shift backward when the back is curved (McKenzie et al.). With time, this can lead to a herniated disc and tearing of the collagen fibres (annulus). When a disc herniates, it presses against the nerves and can pinch them, resulting in sharp pain in the legs (sciatica) or even loss of motor control and sensation.



The position of the pelvis thus is critical for proper sitting posture. When the pelvis is positioned properly, the posture of the spine is also correct. The 24-hour chairs support the spine's natural curvature, preventing chronic illnesses.

Roller container



Unit made from direct-layer 19 mm chipboard.
Interior divided by 32 mm Eurogrids. Uppermost pull-out 1HE with plastic drawer lining. Fully organisable metal soft-roller drawers. Lower drawer runner. Unit comes with central lock. Drawers secured by safety brakes.
Castor diameter: D = 50 mm
Container dimensions: B = 425 mm x D = 580 mm x H = 630 mm
4 drawers 3x2 + 1x3 HE
3 drawers 1x2 + 1x3 + 1x4 HE
2 drawers 1x3 + 1x6 HE

P3-7A
P3-7B
P3-7C

24-hour swivel chair
Mr. 24



24-hour swivel chair Mr. 24
Ergonomic, highly adjustable control room chair for 24-hour continuous use, heavy-duty mechanism with free swing function, extremely robust upholstery, individual weight setting options, reclining level can be configured with hand wheels on each side, configurable sitting area extension, individually configurable lumbar support with the Airmatic system, arm rests can be tilt-adjusted and folded upward to be put away, headrest configurable in height and tilt, reinforced safety gas springs, extra large star base.

Frame/upholstery colour: black
Seat height: 397 - 520 mm; Seat width: 427 mm
Seat depth: 430 mm; Backrest height: 658 mm

Hard castors for carpets
Soft castors for hard floors

S2-6C
S2-6D

24-hour swivel chair
Axia Focus 24/7



Axia Focus 24-hour swivel chair
Ergonomic, highly adjustable control room chair for 24-hour continuous use. The chair support and relaxes the back, neck and arms. The armrests maintain position. The adjustment functions use pictograms to be particularly user-friendly and durable.
Pelvic support:
- pelvis support follows the back's movements so that the pelvis is always sufficiently supported
Seat height adjustment:
- Lift mechanism with controls on both sides
Equipment:
- Weight adjustment
- Continuously lockable backrest tilt.
- height-adjustable headrest which can be inclined
- large polished aluminium star base
- Leather upholstery

Frame colour: polished aluminium
Upholstery: black/light grey
Seat height: 390 - 520 mm
Weight: 40 - 135kg

Hard castors for carpets
Soft castors for hard floors

S2-6E
S2-6F

Meeting island



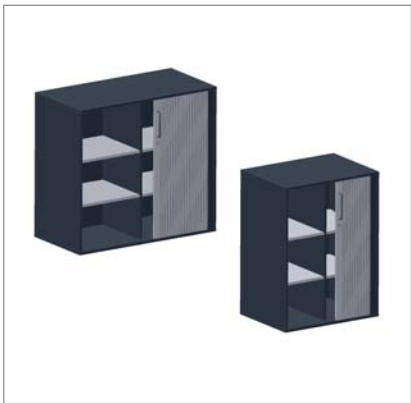
Meeting island
Round 30 mm tabletop, melamine coated, removable and mounted to shelf unit.
The unit consists of four shelf areas, each with two height-adjustable shelves, suitable for storing DIN A4 folders on three levels.
D = 1,300 mm, H = 1,200 mm

P8-1D

Tabletop in hexagonal design

P8-1D X01

Side cabinets



Side cabinet element equipped with horizontal shutters, centre wall, four shelves and security lock.

W = 820 mm, D = 600 mm, H = 1,100 mm
W = 1,200 mm, D = 600 mm, H = 1,100 mm

P8-3G
P8-3H

Base



Cabinet base for side cabinets P8-2/3.

W = 820 mm, D = 600 mm, H = 30 mm
W = 1,200 mm, D = 600 mm, H = 30 mm

P8-4B
P8-4C

Cover plate

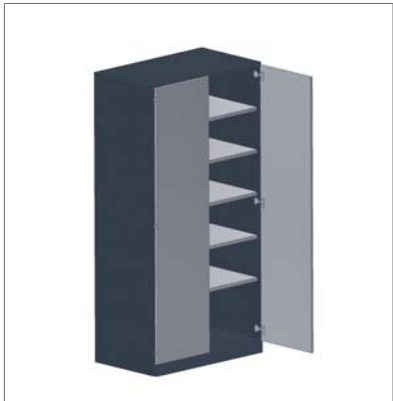


Cover plate for side cabinets P8-3G/3H.

W = 826 mm, D = 610 mm, H = 30 mm
W = 1,206 mm, D = 610 mm, H = 30 mm

P8-4L
P8-4M

Tall cabinet



Complete cabinet
equipped with 2 folding doors with safety lock and
5 shelves adjustable in 32 mm grid

W = 1,019 mm, D = 600 mm, H = 2,200 mm

P8-1V

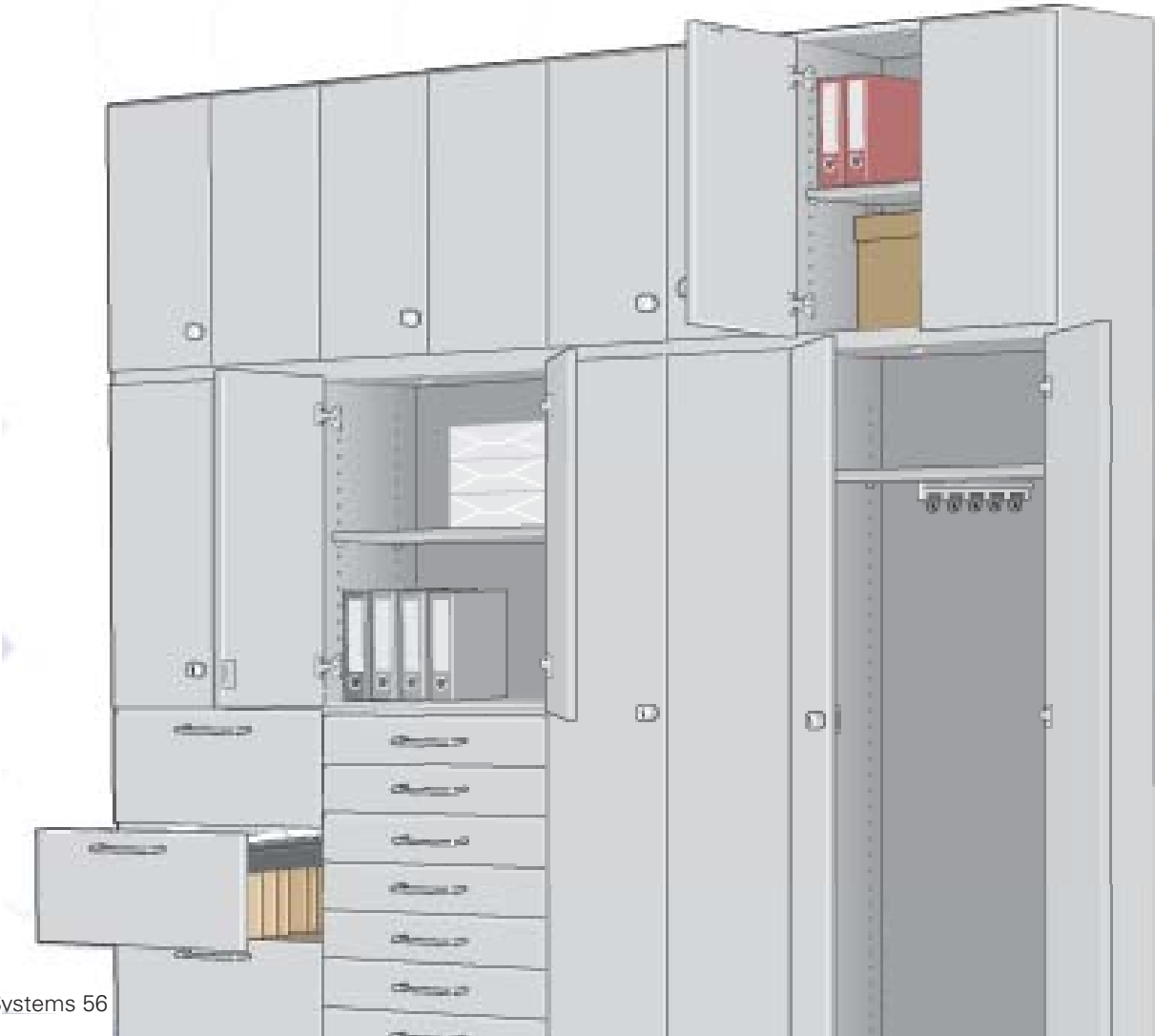
Tall cabinet
with glass
door



Complete cabinet
equipped with two solid glass doors with locking bezel
and handles with safety lock.
5 shelves adjustable in 32 mm grid

W = 1,019 mm, D = 600 mm, H = 2,200 mm

P8-1V X01

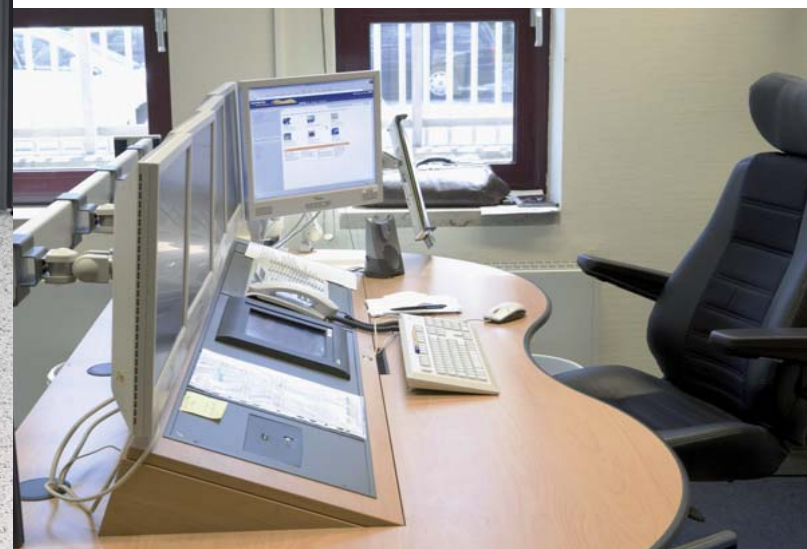
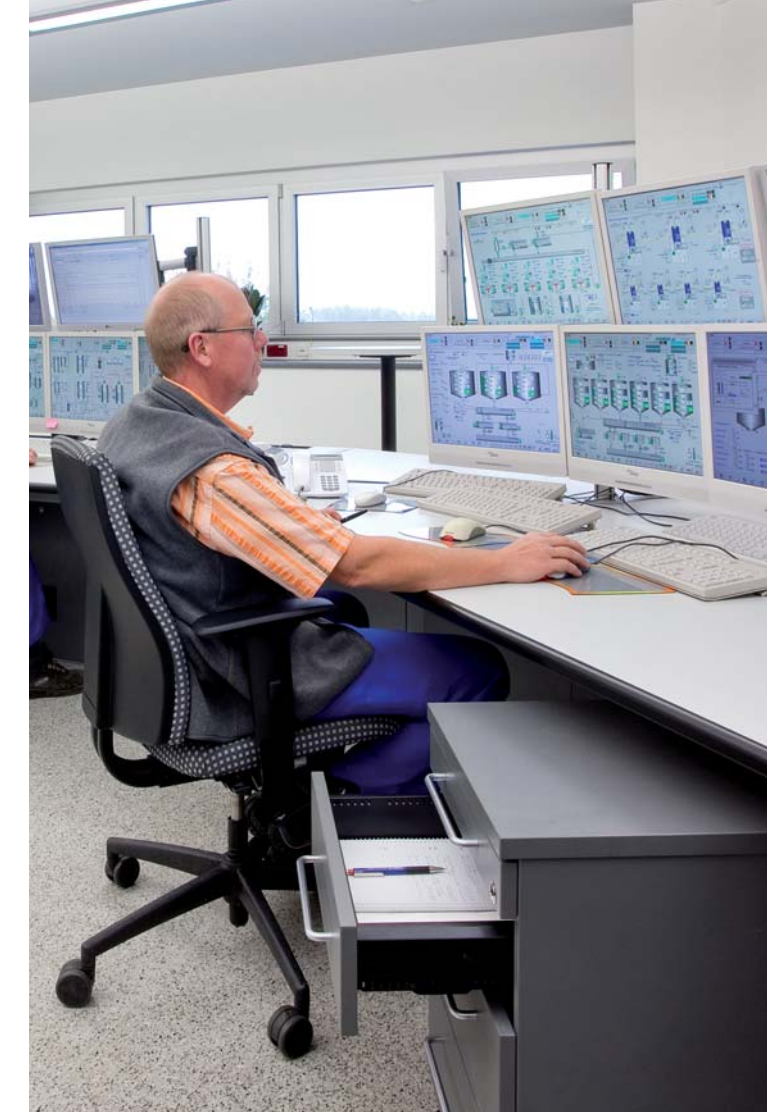


References

Excerpt from our reference list

Company name	City
BASF Schwarzheide	Schwarzheide
Schott Jena Glas GmbH	Jena
Verkehrsregelzentrale Flughafen Berlin Tempelhof	Berlin
GASAG Berlin	Berlin
OVAG GmbH	Hungen-Inheiden
Yokogawa Deutschland GmbH	Ratingen
Fire Department	Dortmund
DHC Solvent Chemie GmbH	Mülheim an der Ruhr
Infracor	Marl
HKM	Duisburg
Dr. Otto-Suwelack Nachf. GmbH	Billerbeck
Schott AG	Mainz
Ticona GmbH	Kelsterbach
Röhm GmbH & Co. KG	Worms
Gerhard Schubert GmbH Verpackungsmaschinen	Crailsheim
Krauss-Maffei Wegmann GmbH & Co. KG	Munich
Bosch Sicherheitssysteme GmbH	Ottobrunn
EWE AG Gasspeicher Rüdersdorf	Rüdersdorf
DRK Emergency Services Rhein-Lahn-Westerwald GmbH	Montabaur
Deutsche Bundesbank	Frankfurt
NBB Netzgesellschaft Berlin-Brandenburg GmbH & Co. KG	Berlin
Vattenfall Europe Mining AG u. Generation AG & Co. KG	Cottbus
Max Planck Institute for Plasma Physics	Garching
ENRO Ludwigsfelde Energie GmbH	Ludwigsfelde
BMW AG	Munich
EnBW Systeme Infrastruktur Support GmbH	Munich





Training | Measuring | Testing | Assembling | Controlling



ELABO GmbH –
a company of the
euromicron group

Roßfelder Straße 56
74564 Crailsheim
Germany

Fon +49 7951 307-0
Fax +49 7951 307-66

info@elabo.de
www.elabo.de