

MultiLED

high power LED lighting system.

..LT - basic lamphead

..FT - flash from 50-250 ms

..PT - pulse width triggered and adjustable light intensity

..Mini - 1/2 size LT

..U80 - below light for microscopy

..ST - for system integrators

..HG - High G

The GSvitec MultiLED is a powerful LED based lighting system. It unites all the characteristics of modern lighting technology. Marathon MultiLED allows you to setup, adjust and control your lighting easily.

The LED advantage:

- long lifetime (50.000 h +)
- low heat radiation, no more burn injuries
- less power consumption
- small size

Our standard power supplies

All power supplies presented here work for all MultiLed Products except otherwise noted.

Basic Power supply

- Delivered with the MultiLed LT, FT, PT, R100, High G, and suitable for the ST100 (not included), this table power supply comes with an XLR jack and 4m cable.

MultiLed Deutronic™ 100

- As the basic power supply, but a Deutronic product with far better specifications this power supply is suited best for industrial applications and can be chosen as an upgrade for devices delivered with a Basic power supply.

MultiLED G300

- Supplies power for up to 3 MultiLED LT or High-G or LT Mini lamp heads
- Separate brightness control for each lamp head
- Strobe via trigger signal (TTL) down to 30 µs (white) or 1 µs (color)
- Trigger in: BNC, optically isolated, 5V/ 1.2 mA up to 30 Volt/12 mA or switch
- Trigger out to chain and trigger more than one generator
- Rugged XLR connectors
- Dimensions: 330*185*160 mm without stand
- Dimensions stand: (w * L) 235 * 210 mm
- Weight: approx. 5 kg

MultiLed G300 19“

- the 19“ rack version of the G300. Dimensions: 2HE, 310 mm deep color : Aluminium

MultiLed G600 19“

- same as G300 19“, but for 2x3 lamp heads, choose freely for each 2 output groups of 3, which lamp type it shall power. MultiLED LT or High-G or LT Mini lamp heads

Custom power supplies

Special applications as IP protection or multi lamp head can be made. Generators with more than 3 outputs, other Lamp heads and/ or IP protection class customisable.



Table power supply and 4m XLR cable-standard or industrial (Deutronic) variant.



G 300 Generator



Custom rugged power distributor for 9 MultiLed

Lamp Heads for standard power supplies

MultiLED LT

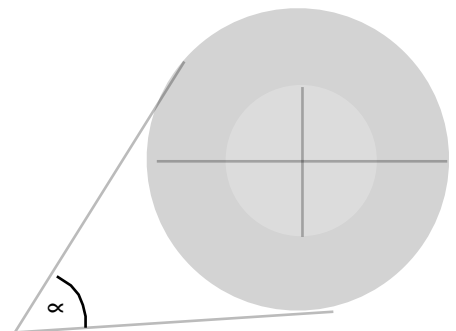
- 24 High power LEDs, 84 Watt, 24 Volt (7,700 Lumen total)
- Robust and highly available XLR jack
- fan inside
- Environmental protection: as IP20
- Alternative: other IP categories on request
- Weight: approx. 1,1 kg
- bottom 1/4-inch standard thread for photographic accessories and mount
- Lenses: standard full angle 15°
- Alternative: 20°, 30°, 50°, 60°, 180°. Can also be changed after sales on request. Dimensions: 160*117*80 mm
- Basic power supply and 5m XLR cable included.
- Alternative/ Accessory: longer cables or other cable types on request, **green, red, blue, white CRI-90 LEDs on request, IP class on request.**



MultiLed LT, PT and FT

15 DEGRESS LENS - EXEMPLARY BRIGHTNESS TABLE

DISTANCE	INNER CIRCLE (DIAMETER / LUX)	OUTER CIRCLE (DIAMETER / LUX)
2m	300 mm / 15.000	500 mm / 9.000
1.5m	200 mm / 25.000	450 mm / 10.000
1.2m	200 mm / 35.000	350 mm / 20.000
0.5m	100 mm / 150.000	--
0.1m	100 mm / 600.000	--



MultiLED PT

- A variant of the MultiLed LT, the PT offers a strobe input (BNC TTL, invertable) and a potentiometer to control brightness, working in strobed and in continuous light mode. Min. flash time e.g. 30 usec white, 1 usec green. Shorter on request.

MultiLED FT

- A variant of MultiLED LT, the FT has an additional BNC input for TTL signals. The flash time (starting on first flank) can be regulated in a preselected range (before order) e.g. from 50 to 250 ms.

MultiLED LT Mini

- The MultiLed LT Mini is a variant of the MultiLed LT. It is a half sized MultiLed LT circuit board w. 12 instead of 24 Leds, in a small form factor housing. Includes 1 basic power supply, 4 m XLR cable, 1.5m cable to the lamp head.



MultiLed LT mini

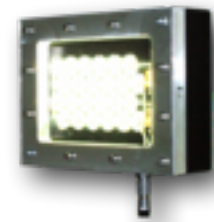
Lamp heads with specific power supplies

High G lamp heads

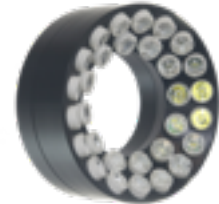
- discontinued. New Version in December 2014

MultiLed R100 Ring Light

- Finally enough light for down to 1 μ sec exposure w. b/w cameras, depending on camera and aperture
- 150 W LED Power focused in 100 mm distance to a spot of 40*40mm. Other working distances on request.
- Inner radius 39mm, outer radius 70 mm, height 70 mm incl. connectors. 2*standard 1/4" threads on the side (90° to each other)
- Weight: 950 g
- Passively cooled , 10 % duty cycle or up to 2 min. operation
- BNC, TTL, pulse width trigger
- Includes special 150W Deutronic table power supply



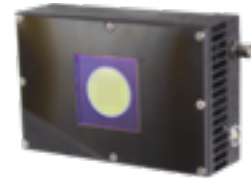
MultiLed High G



MultiLed R100

MultiLED U80

- below light for microscopy and small object handling purposes
- work surface 50*50 mm IR blocking, hardened-glass.
- pulse width trigger, BNC TTL input
- table power supply 100 W and 4m cable / Lemo connector
- Dimensions:150x100x45 mm (LWH). Weight 800g



MultiLed U80

MultiLed Mx High G Flood Lights !!NEW!!! Preliminary!!!

- Finally enough light for down to 1 μ sec exposure w. b/w cameras, depending on camera and aperture
- 120 W LED Power in 35*35*15 mm package, plus 15 mm depth for the mounting plate.
- Combine multiple units in 1 lamp head: M1, M4, M9, M25, M49 and M100.
- M100 is 100 units 120 W each, in a 350*350*30 mm package.
- Passively cooled , 5% duty cycle or some seconds of continuous operation
- Overtemperature protection
- BNC, 5 V TTL, pulse width trigger
- BATTERY OPERATED! Typically 20 minutes capacity at 5% duty cycle. Charge with 90-230 V AC and 48 V DC. Contact us for details.



MultiLed Mx (M9)

IR and UV Versions / CRI

Infrared and ultraviolet versions are available on request. CRI 90 Leds available too.

Package MultiLed Set

a ready to use package consisting of 2 MultiLED LT lamp heads, 1 MultiLED G300, 2x XLR cables (5 m), 2 Manfrotto tripods, 2 Manfrotto tilt swivel heads and one bag containing all the equipment.



MultiLed Set

