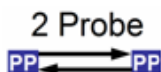


PowerProbe 500 (IP/Analog Probe)

Active Service Assurance

Test Applications

- ▶ End-to-End VoIP Testing and Monitoring
- ▶ Speech Quality (MOS, Clipping, Echo, Delay)
- ▶ Video Connectivity and Quality Testing
- ▶ IP Service Quality Monitoring



* Testing to PowerProbe 30 Responders is a PowerProbe 500 ordering option

Overview

Tektronix' Active Assurance PowerProbe 500 is a cost-effective service level test probe for Internet, Video and Voice-over IP service quality testing and monitoring over IP, PSTN and Wireless networks including WiMAX and cellular.

Designed for a small central office, Point-of-Presence (POP) or customer site, the PowerProbe 500 can initiate and receive test calls on both analog and IP interfaces for a true bi-directional, end-to-end service quality assessment.

Optimized VoIP Probe

- ▶ Analog & IP QoS metrics
- ▶ Aggregated (E-Model) Metrics
- ▶ Complete test call recording & playback
- ▶ A cost effective solution for large deployments
- ▶ Ideal for troubleshooting & network segmentation

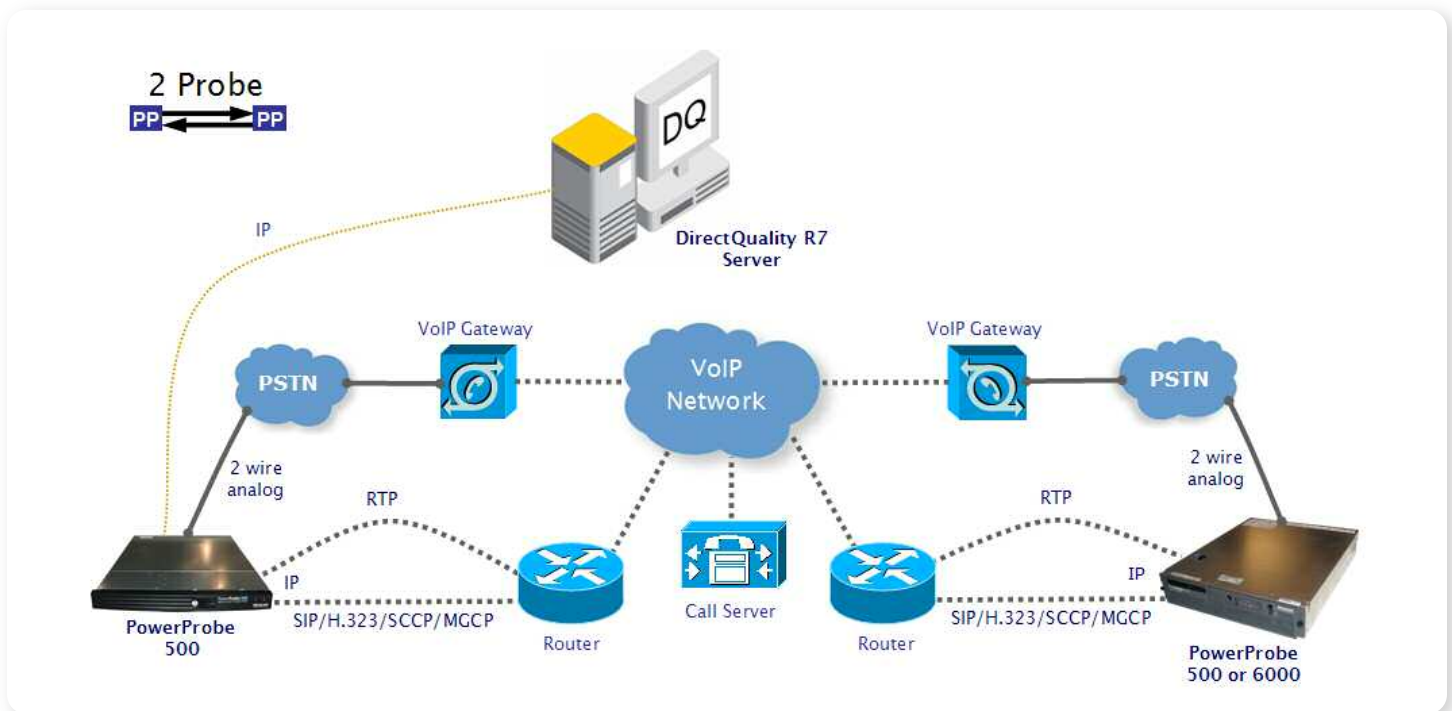
Integrated IP/Analog 2 Wire Functionality:

- ▶ VoIP Ethernet 10/100 (MGCP, SIP, H.323, SCCP)
- ▶ RTP Gigabit Ethernet (RTP, Ping, DNS, Trace Route)
- ▶ 2 wire analog FXO (PSTN)

Tektronix[®]

Enabling Innovation

Enabling Next-Generation Network Innovation



Key Features / Benefits

All-in-One Test Platform

The PowerProbe 500 handles Voice and Video-over-IP, Internet and PSTN testing in a single unit. Optimized for economic deployment in large-scale networks, this probe is ideal for testing and monitoring applications that do not require the more extensive analysis capabilities found in Textronix' PowerProbe 6000.

VoIP SLA QoS Indicators

The PowerProbe 500 supports an extensive array of test agents, capable of measuring over 100 QoS metrics including international standard ITU-T PESQ MOS, Post-Dial Delay (PDD) and E-Model R-factor / MOSr – essential for VoIP SLA enforcement.

Standard VoIP Protocols

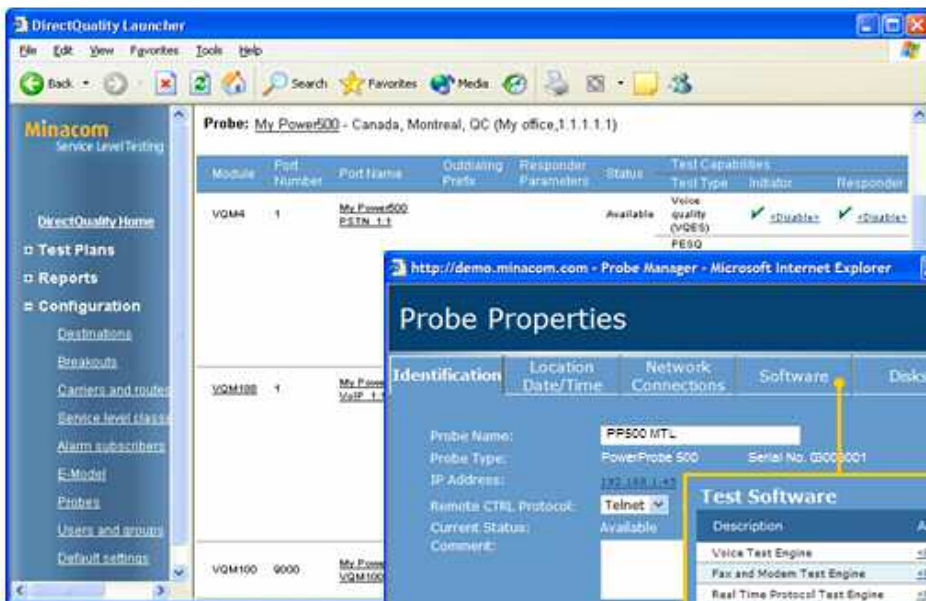
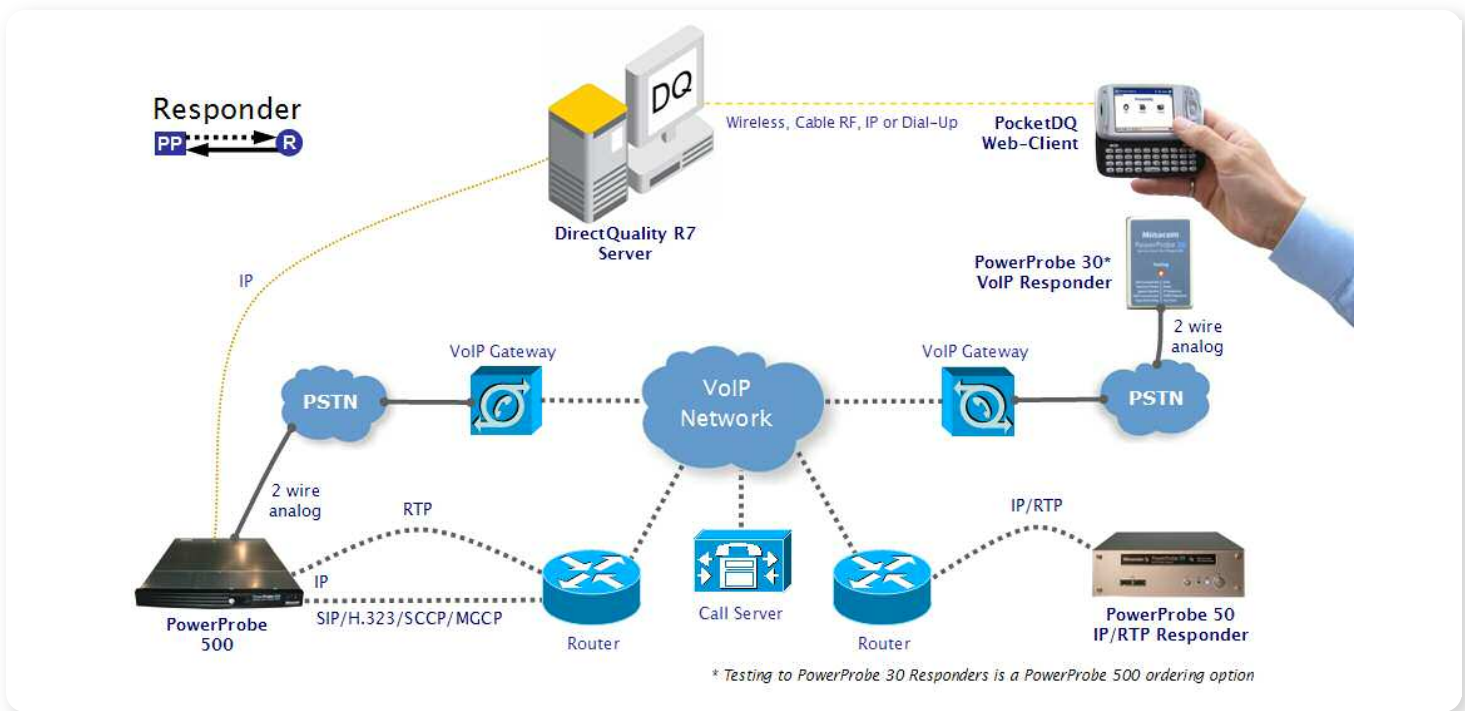
Supports all standard VoIP signaling protocols including SIP, H.323, MGCP and SCCP / Skinny.

End-to-End Testing

Performs bi-directional telephony and Internet quality tests to remote PowerProbe 6000 / 500 test probes, as well as award-winning PowerProbe 50 and 30* service level test responders.

Network Performance

PowerProbe Test agents can automatically analyse network status during test-calls and report Call Disposition Codes (CDC) using an E.180 database of worldwide tones. The DirectQuality R7 web-based OSS calculates related performance metrics including ASR, ABR, CCR, NER.



Remote Management

The DirectQuality R7 web-based OSS lets you to remotely maintain and configure any PowerProbe in your network. Perform upgrades and backups, control test agents, and change IP address / Probe identifier from any web browser.

Probe Maintenance

Phone (dial-up access):

Probe Update

Probe configuration file: MontrealDemo.xml Update

DirectQuality lets you know when probe updates are required

Probe	Status	Action	Type	Country	City	Modules	IP Address	Tones Update	Last Update	Needs Update
PP500 MTL	Available	Ping Reboot Shutdown	PowerProbe 500	Canada	Montreal, QC		192.168.1.45	2006-02-27 05:52:36		No
TSS	Available	Ping Reboot Shutdown	PowerProbe 6000	Canada	Montreal, QC		192.168.1.171	2005-12-06 13:12:27		Yes

Tektronix' Communications Business Division -

Enabling Next-Generation Network Innovation

Specifications

Test Probe

Processing Unit

Processor	Intel Xeon DP 3.2GHz
Front-Slide Bus	533MHz
Memory	1GB RAM
Voltage	120/240 VAC

Physical Dimensions

Form Factor	1U
Rack Dimension	19" Rackmount
Weight	27 Kg

Interface Module Configurations

1. 2 FXO (2-wire analog) outputs
2. 1 FXO output + 1 VoIP output
3. 2 VoIP outputs

For Further Information

Tektronix maintains a comprehensive, constantly expanding collection of application notes, technical briefs and other resources to help engineers working on the cutting edge of technology.

Please visit www.tektronix.com

Contact Tektronix:

Please visit
www.tektronix.com/communications

Phone:
1-800-833-9200 option 1
+1-469-330-4000
Active Test Office:
(514) 380-5530

Locate your nearest
Tektronix representative
www.tektronix.com/contactus

Tektronix[®]
Enabling Innovation