

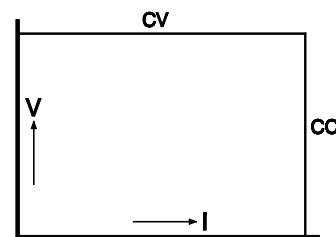


SM6000 - series
6000 watts DC POWER SUPPLIES



Three phase input

SM 15-400	0 - 15 V	0 - 400 A
SM 30-200	0 - 30 V	0 - 200 A
SM 45-140	0 - 45 V	0 - 140 A
SM 60-100	0 - 60 V	0 - 100 A
SM 70-90	0 - 70 V	0 - 90 A
SM 120-50	0 - 120 V	0 - 50 A
SM 300-20	0 - 300 V	0 - 20 A



- Efficiency up to 90 %
- Weight 27 kg
- 3 phase 380V, 400V, 415V AC input
480V optional
(50 - 60 Hz, line to line voltage)
- Active Power Factor Correction, PF=0.98
- 200 kHz MOSFET power conversion technique
- 0 - 5 V analog programmable
(on both voltage and current)
- Isolated analog programming with optional
ISO AMP CARD to prevent earth loops
- **IEEE 488** or **RS232** programming with optional
interface cards
- Very low output ripple and spikes
- Very stable output voltage or current ($5 \cdot 10^{-5}$ - 10^{-4})
- No inrush current during switch on
- Master / Slave parallel and series operation with
equal current and voltage sharing
- Can be used as a building block to form a high
power unit
- Input / output insulation 3750 V rms
- Designed for long life at full power
- Protected against all overload and short circuit
conditions
- Voltage and current control with 10 turn potenti-
ometers, resolution 0.03 %
- Low noise blower, fan speed adapts to tempera-
ture
- Output On/Off button
- Interlock